

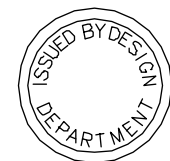
M5x25 BLK.NYLON CH.HD. SCREW, M5 PLAIN WASHER & M5 NYLON FULL NUT.

SOCKET

NOTES:

- 1) MONITORED EARTH PUSH BUTTONS ASSEMBLY CONSISTS OFF: - CONTACT FRONT N/O, CONTACT FRONT N/C, LAMPHOLDER, COLOUR CAP WHITE, COLOUR CAP RED, PUSHBUTTON, INSCRIPTION CAP, COUPLER, NEON INDICATOR & FILAMENT LAMP.
- 2) INTERNAL RESISTORS: REFER TO CIRCUIT DIAGRAMS.
- 3) 'SAFELINK RESISTOR' LABEL PROVIDED ON RCCB 415V / 3 PHASE WITHOUT NEUTRAL
- 4) INTERNAL CABLES, SLEEVES AND BUTT END CONNECTORS, AS REQUIRED.
- 5) INTERNAL CABLE TIES, AS REQUIRED.
- 6) F* - M5 NUTSERT FITTED ON FRONT FACE OF MOUNTING PLATE.

THIS DRAWING IS THE PROPERTY AND COPYRIGHT OF BLAKLEY ELECTRICS AND MUST NOT, WITHOUT THEIR WRITTEN CONSENT, BE PASSED ON, COPIED, OR USED FOR ANY OTHER PURPOSE.



CUSTOMER INFORMATION COPY

REV:	A	B	C	D	E										
EDR:	2163	3354	3398	3700	4530										
UNLESS OTHERWISE STATED:- ALL DIMENSIONS IN MM. TOLERANCES TO H30052 FIXING STANDARD TO H30051 WIRING STANDARD TO H20051										MATERIAL		SIZE			
DO NOT SCALE THIS DRAWING. IF IN DOUBT, ASK										REF.		COPY ISSUED			
TITLE										ORIGINAL SCALE 1:3		BLAKLEY ELECTRICS LIMITED			
GENERAL ASSY										DATE 19/02/07					
TRIPower SOCKET OUTLET										DRN. RLL		DRAWING No. C3005		REVISION E	
AMRC & AMRC/OC TO 32A										CHKD.		SHEET 1 OF 1			
										APPD.					