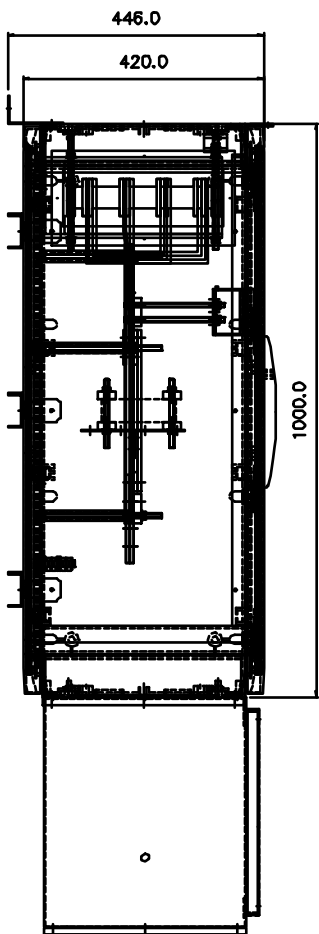
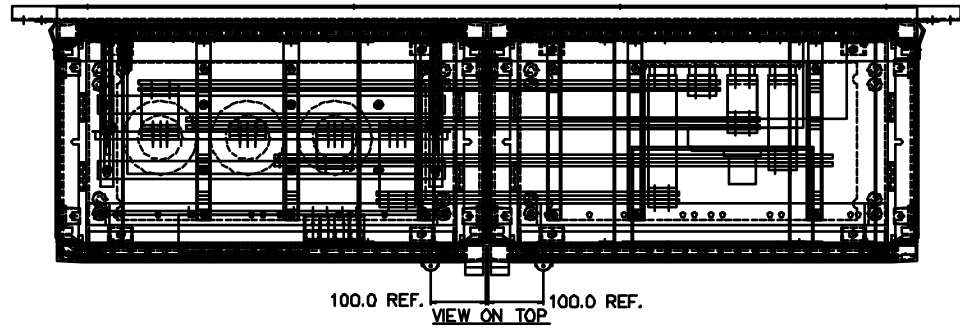
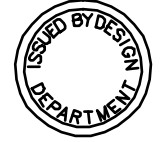


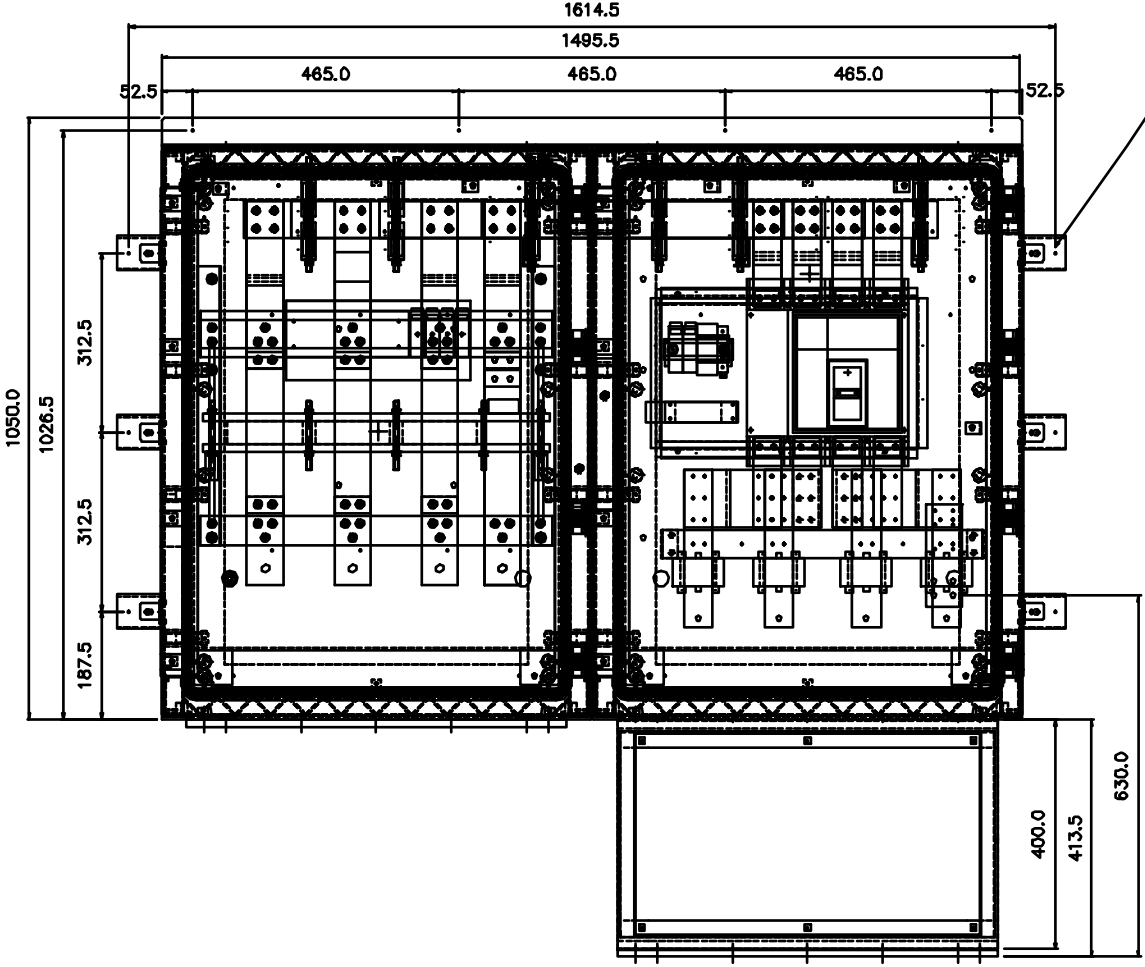
1 2 3 4 5 6 7 8 9 10 11 12 13 14 15 16

NOTES:
 1. REFER TO SHEET 2 FOR ADDITIONAL ASSEMBLY DETAILS
 2. TYPICAL IP RATING OF ASSEMBLY - IP55

CUSTOMER
 INFORMATION
 COPY

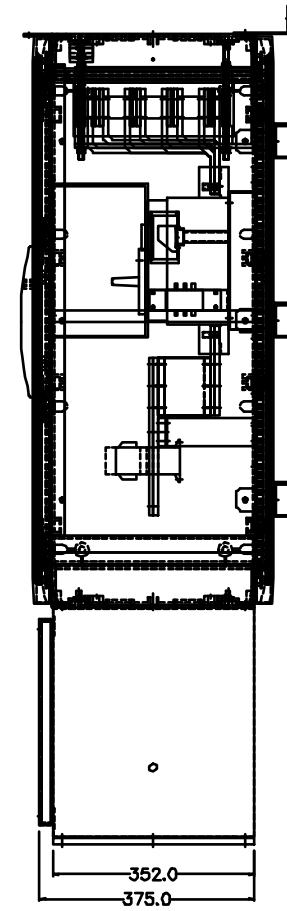


VIEW ON L.H.S.

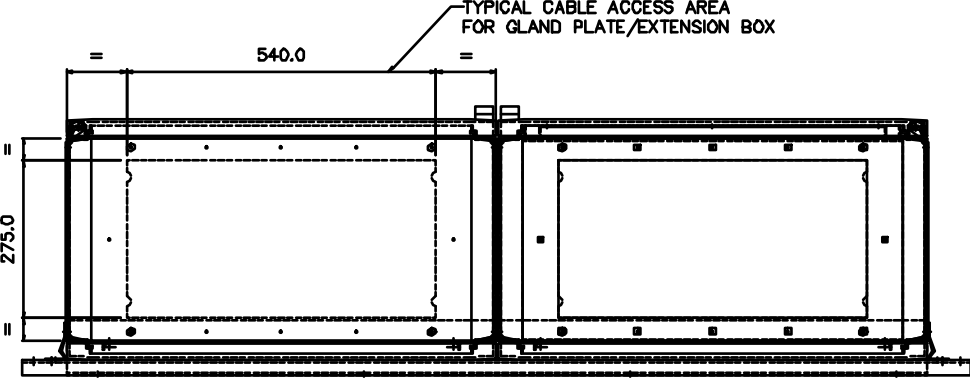


VIEW ON FRONT

10x M8 FIXING POINTS



VIEW ON R.H.S.



VIEW ON UNDERSIDE

THIS DRAWING IS THE PROPERTY AND COPYRIGHT OF BLAKLEY ELECTRICS AND MUST NOT, WITHOUT THEIR WRITTEN CONSENT, BE PASSED ON, COPIED, OR USED FOR ANY OTHER PURPOSE.

REV	DATE	BY	CHKD	APPD	MATERIAL	SIZE
UNLESS OTHERWISE STATED: ALL DIMENSIONS IN MM. TOLERANCES TO H30002 FIXING STANDARD TO H30001 WIRING STANDARD TO H20001 WELDING STANDARD TO Q1 61. DO NOT SCALE THIS DRAWING. IF IN DOUBT, ASK.	REF: S031015	COPY ISSUED	ORIGINAL SCALE: 1:8	DATE: 21.07.10	DRN: MW	DRWING NO: A20514
TITLE: 1600A CTC/ARC					REVISION: A	
					SHEET 1 OF 2	

1 2 3 4 5 6 7 10 11 12 13 14 15 16 A1