

1 2 3 4 5 6 7 8

A

B

C

D

E

F

A

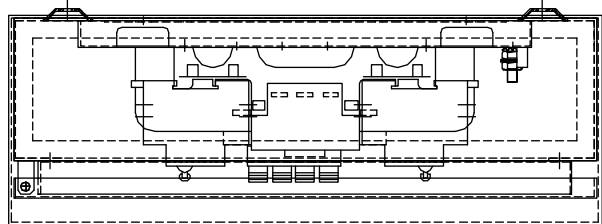
B

C

D

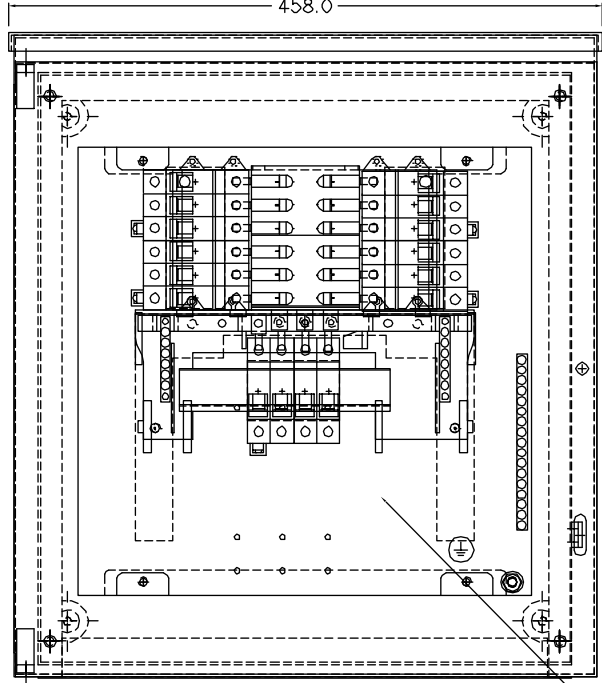
E

F

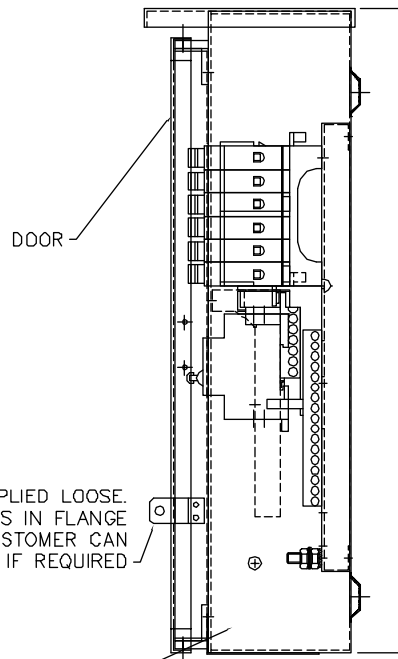


VIEW ON TOP

458.0



VIEW ON FRONT



VIEW ON R.H.S

DOOR

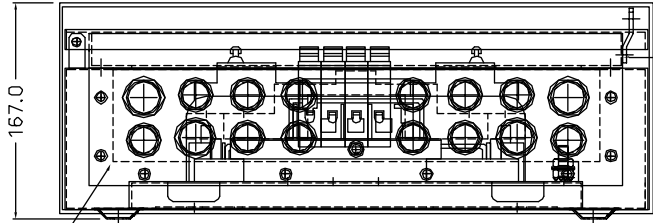
497.5

HASP SUPPLIED LOOSE.  
FIT FIXINGS IN FLANGE  
SO THAT CUSTOMER CAN  
FIT HASP IF REQUIRED

ENCLOSURE

PAN ASSY

FRONT COVER



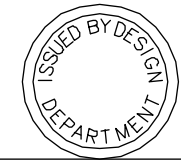
VIEW ON BOTTOM

167.0

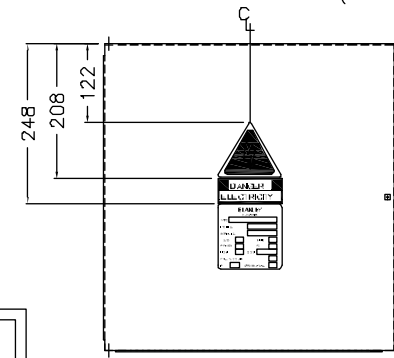
GLAND PLATE

NOTES

- 1) DOOR SECURED TO ENCLOSURE WITH SPRING PINS.
- 2) PAN ASSEMBLY FIXED TO ENCLOSURE USING M5x12 PAN POZI FIXINGS TO F2
- 3) FRONT COVER HELD TO ENCLOSURE USING M6x16 PAN POZI FIXINGS TO F1 C/W CAPTIVATING NYLON WASHERS.
- 4) GLAND PLATES SECURED USING M6x20 HEX HEADS TO F6
- 5) PAN ASSEMBLY PROVIDED WITH A CHOICE OF INCOMING DEVICES, AS SPECIFIED.
- 6) FIT LARGE FLASH LABEL, DANGER ELECTRICITY LABEL AND RATING LABEL ON DOOR AS DETAILED BELOW
- 7) LARGE FLASH & 'ISOLATE ELSEWHERE' LABELS FITTED CENTRALLY AT BOTTOM OF FRONT COVER (NOT SHOWN)
- 8) EARTH LEAKAGE LABEL FITTED TO LEFT OF ISOLATOR CUTOUT ON FRONT PANEL (NOT SHOWN)
- 9) DISTRIBUTION SLOTS BLANKED OFF USING SAREL BLANKING STRIP (020141)



CUSTOMER INFORMATION COPY



LABEL POSITIONS (1:10)

REV:	A	B	C	D	E														
EDR:	3596	3761	4244	4587	4990														
UNLESS OTHERWISE STATED:- ALL DIMENSIONS IN MM. TOLERANCES TO H30052 FIXING STANDARD TO H30051 WIRING STANDARD TO H20051 WELDING STANDARD TO QAI 61.												MATERIAL		1.5mm MILD STEEL		SIZE			
DO NOT SCALE THIS DRAWING. IF IN DOUBT, ASK												REF.		COPY ISSUED					
TITLE												ORIGINAL SCALE		1:4		<b>BLAKLEY</b> ELECTRICS LIMITED			
'E1' ECONOMY MDA												DATE		14.05.09					
												DRN.		B.W.		DRAWING No.		REVISION	
												CHKD.				C10652		E	
												APPD.				SHEET		1 OF 1	

THIS DRAWING IS THE PROPERTY AND COPYRIGHT OF BLAKLEY ELECTRICS AND MUST NOT, WITHOUT THEIR WRITTEN CONSENT, BE PASSED ON, COPIED, OR USED FOR ANY OTHER PURPOSE.

1 2 3 4 5 6 7 8 A3