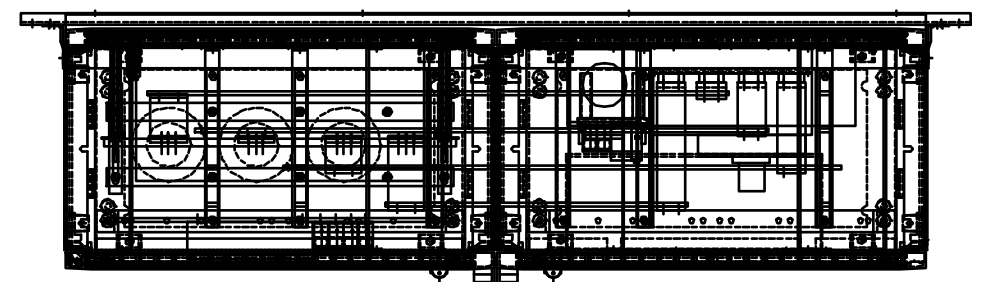
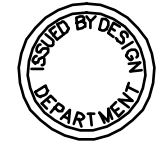


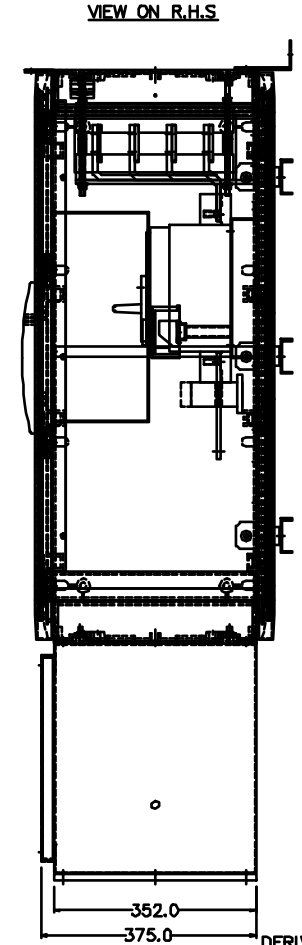
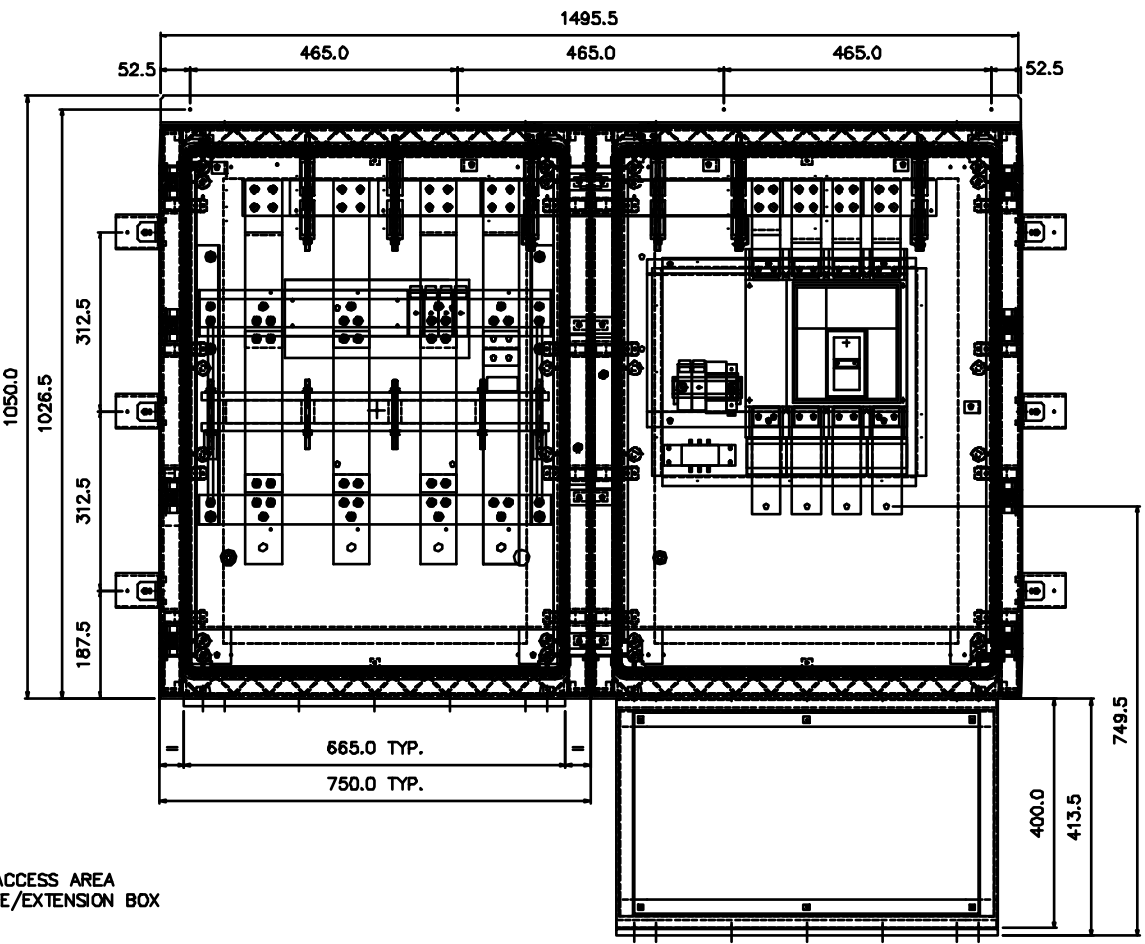
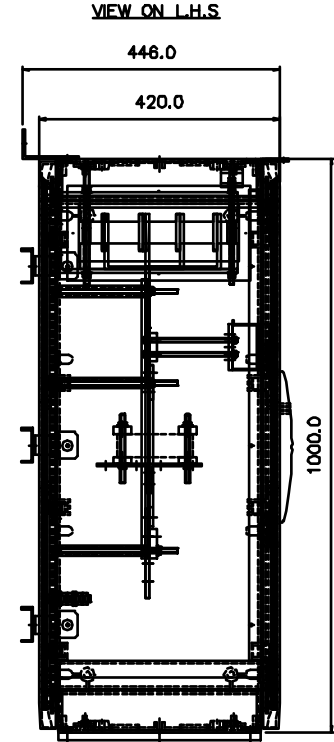
1 2 3 4 5 6 7 8

NOTES:  
 1. REFER TO SHEET 1 FOR ADDITIONAL ASSEMBLY DETAILS  
 2. TYPICAL IP RATING OF ASSEMBLY - IP55

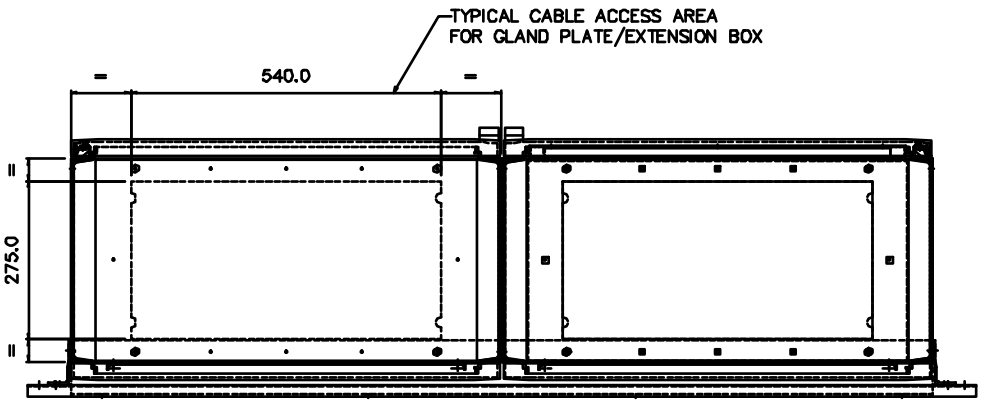
CUSTOMER  
 INFORMATION  
 COPY



100.0 REF. 100.0 REF.  
 VIEW ON TOP



DERIVED FROM C18166



VIEW ON UNDERSIDE

VIEW ON FRONT

REV:	A	B	C	D					
EDR:	5085	5182	5200	5285					
UNLESS OTHERWISE STATED:- ALL DIMENSIONS IN MM. TOLERANCES TO H30052 FIXING STANDARD TO H30051 WIRING STANDARD TO H20051 WELDING STANDARD TO QAI 61.					MATERIAL		SIZE		
DO NOT SCALE THIS DRAWING. IF IN DOUBT, ASK					REF. STD		COPY ISSUED		
TITLE GENERAL ASSY. FOR 800A CT CHAMBER/ MCCB ARRANGEMENT					ORIGINAL SCALE 1:12		BLAKLEY ELECTRICS LIMITED		
					DATE 21.07.10				
					DRN. MW				
					CHKD.				
					APPD.		SHEET 2 OF 2		

THIS DRAWING IS THE PROPERTY AND COPYRIGHT OF BLAKLEY ELECTRICS AND MUST NOT, WITHOUT THEIR WRITTEN CONSENT, BE PASSED ON, COPIED, OR USED FOR ANY OTHER PURPOSE.

1 2 3 4 5 6 7 8 A3