

Introducing the VELR series Earth Leakage Sensor

The VELR adjustable sensitivity and adjustable time delay earth leakage sensor and remote CT is a new addition to the Blakley range. VELR devices are incorporated within a variety of Blakley distribution and protection assemblies or they can be purchased as loose items by OEMs, etc., for incorporation within their own assemblies.

The VELR series has many outstanding features, including:

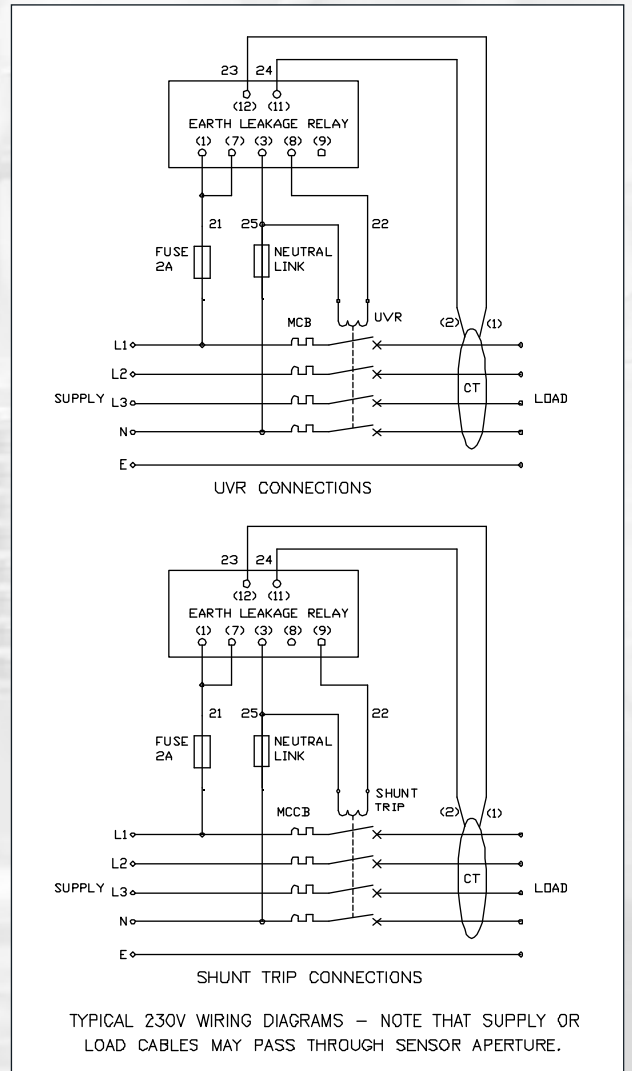
- Auxiliary Voltage Range of 110V to 400V, 50Hz
- Sensitivity settings of 30mA, 100mA, 300mA, 500mA and 1000mA (minimum sensitivity dependent on CT size)
- Time Delay settings of 0.02, 0.2, 0.5, 1 and 5 seconds
- Precise adjustment of sensitivity and time delay by dip switches located behind a sealable, hinged cover
- RCD "ON" and RCD "Tripped" Indicators
- A range of CTs from 35mm ID to 210mm ID
- CTs not individually matched to sensors
- VELR Trips if CT is disconnected from sensor

The wide range of sensitivity settings makes the VELR ideally suited to protect installations where an RCD may be required to provide supplementary Basic Protection at certain times (Direct Contact Protection, 30mA sensitivity) or Fault Protection at other times (Indirect Contact Protection, medium to low sensitivity). When the 30mA sensitivity setting is selected, the time delay should always be set at 0.02 seconds in order to achieve an overall trip time of less than 0.04 seconds (40 milliseconds).

The VELR incorporates a volt free, single-pole changeover relay which can operate a shunt-trip (NO) or an Under Voltage Release / Contactor (both NC). VELRs can also be used in earth leakage indicator systems to operate an audible or visual alarm when the pre-set trip level has been reached.



VELR Sensor and CT with 35mm ID



Typical Schematic Diagrams

Part No.	Description	Sensitivity Range	Max Load Current #
S200831	VELR sensor	Subject to CT ID	Subject to CT ID
S031091	CT, 35mm ID	30mA to 1A	225A
S031092	CT, 60mm ID	30mA to 1A	400A
S031093	CT, 80mm ID	100mA to 1A	630A
S031094	CT, 110mm ID	250mA to 1A	800A
S031095	CT, 160mm ID	250mA to 1A	1000A
S031096	CT, 210mm ID	500mA to 1A	1600A

Max current is dependent on conductor type and specification.

THE POWER PROFESSIONALS

HIGHER POWER TRANS POWER SAFE POWER TEM POWER PRO POWER GREEN POWER

• SOUTH 1 Thomas Road, Optima Park, Crayford, Kent DA1 4GA Tel: 0845 074 0084 Fax: 0845 074 0085

• NORTH Unit 55, Monckton Road Ind Estate, Wakefield WF2 7AL Tel: 0845 074 0086 Fax: 0845 074 0087

www.blakley.co.uk • sales@blakley.co.uk

THE COMPANY RESERVES THE RIGHT TO CHANGE PRODUCTS WITHOUT PRIOR NOTICE.



Cart. No. 902091

SPDS8 - 08/10