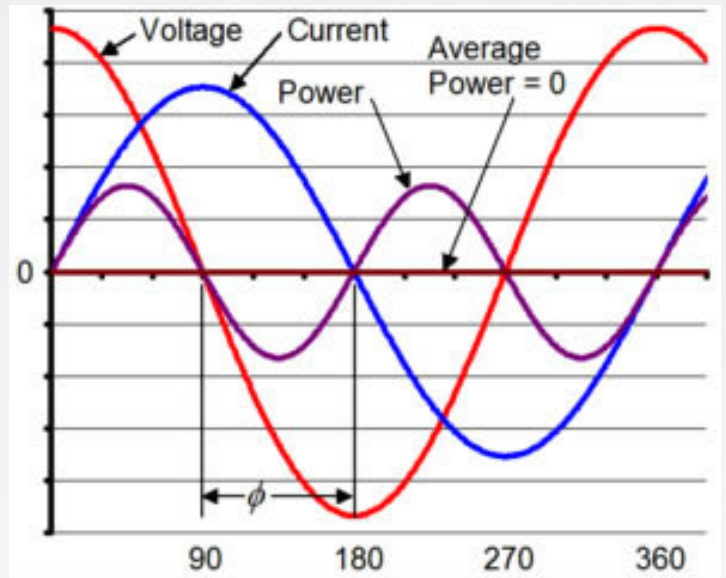


Data Logging and Analysis

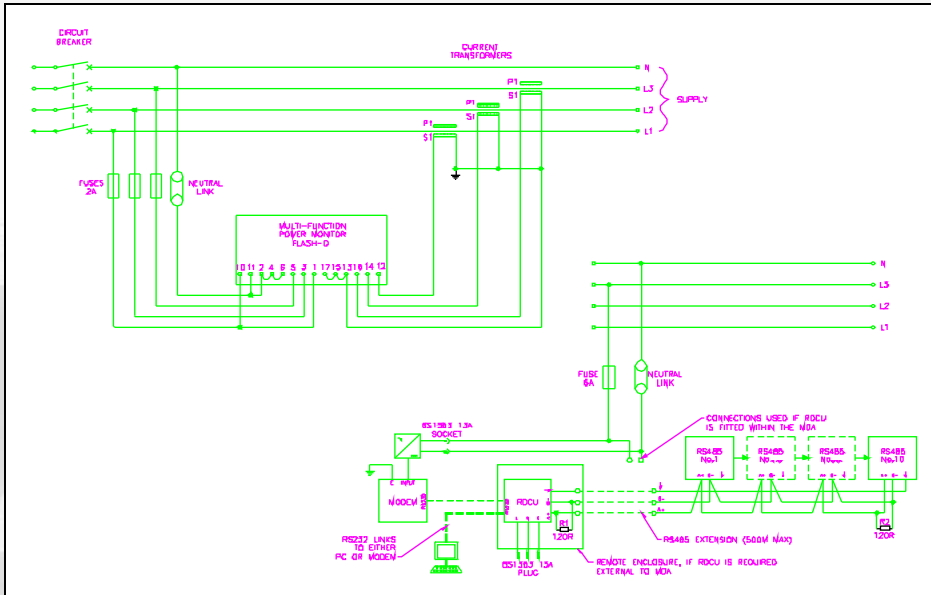
Power Consumption and Quality Survey

When very detailed information is required on power consumption or power quality, we can arrange for a power survey to be carried out. Surveys can last for whatever period of time is required, whether it is a day or a week or a month, and they can provide precise data on a wide range of topics such as the overall power consumed by the site, when it was consumed, maximum demand and when it occurred, power factor (the overall average and from time to time), harmonic distortion detection, etc.

A detailed analysis of the Data and Power Management recommendations are provided as part of the survey package. Costs depend on the complexity and duration of the survey.



Incorporation of data logging equipment into high current MDAs



On large projects where there is a requirement to acquire detailed consumption data for the duration of a contract, each feeder of an MDA can incorporate a Multi-function Power Meter with an RS485 link to an integral Remote Data Collection Unit (RDCU). The RDCU can be linked to a modem or PC, allowing power consumption to be monitored in real time or recorded for future analysis.

Portable Data Loggers

For load currents of up to 600A we can supply low cost, easy to use current loggers, which can record basic current consumption data for a period of up to 3 months. Simply clamp the meter around a mains cable, select the logging frequency (from every second to every 30 minutes) and leave it for a day, a week or a month. The data can be downloaded to a PC or laptop for analysis.



- **SOUTH** 1 Thomas Road, Optima Park, Crayford, Kent DA1 4GA Tel: 0845 074 0084 Fax: 0845 074 0085
 - **NORTH** Unit 55, Monckton Road Ind Estate, Wakefield WF2 7AL Tel: 0845 074 0086 Fax: 0845 074 0087
- www.blakley.co.uk • sales@blakley.co.uk

BLAKLEY
ELECTRICS