

BUSBAR PACKERS OR CABLE CONNECTIONS REQUIRED EVERY 500mm MINIMUM AS DETAILED IN THE BUILD COMMENTS

1600A NEUTRAL IS A SINGLE BAR

75 x 10mm PACKERS ON L1, L2 & L3

SINGLE PACKER USED ON NEUTRAL CONNECTION

M10 X 70

M10 X 75/80

TOP VIEW OF ACB RISER BARS

PACKERS SHOWN SOLID FOR CLARITY

2 PACKERS USED ON L2

M10 x 60mm

M10 x 50mm

M10 X 75,0

M10 X 70,0

ACB RISER BARS

2 OFF 10mm PACKERS PER PHASE ON ACB TERMINALS

M10 X 80,0

ACB INCOMING BARS VIEWED FROM THE REAR

17,5

630A 4P MCCB C/W MRCD & TEST SOCKETS (ADJUSTABLE ON SITE FROM 225A TO 630A)

2 OFF 800A 4P MCCBs C/W MRCD & TEST SOCKETS (ADJUSTABLE ON SITE FROM 320A TO 800A)

2 OFF 1250A 4P MCCB C/W MRCD & TEST SOCKETS (ADJUST ON SITE FROM 500 TO 1250A)

GENERATOR INCOMER 1250A 4P MCCB C/W MRCD & TEST SOCKETS (ADJUST ON SITE FROM 500 TO 1250A) KEY INTERLOCKED WITH THE MAIN INCOMER

4 OFF CTs 1 CT FITTED TO L1 TO BE USED TO FEED THE TERMINALS IN THE PFC SECTION. THE SET OF 3 TO FEED THE kWhr METER.

3200A 4P NA ACB C/W TEST SOCKETS & IWhr METER PAD-LOCKABLE IN THE OFF POSITION KEY INTERLOCKED WITH THE 1250A GENERATOR INCOMER

INCOMING TERMINALS SUITABLE FOR UP TO 6 X 400mm² CABLES PER PHASE M16 CONNECTIONS

MRCD CTs W/ SHIELDS AS REQUIRED

MRCD C/W FUSES TEST SOCKETS C/W FUSES

INCOMING TERMINALS SUITABLE FOR UP TO 6 X 630mm² CABLES PER PHASE M16 CONNECTIONS

RHS OF UNIT

RHS OF GENERATOR INCOMER

FRONT OF UNIT

DISTRIBUTION EARTH BAR C34719

EARTH BAR 1600A-C34743

EARTH STUB E28577

EARTH BAR 3200A-1600A C36283

EARTH STUB E28577

EARTH BAR 3200A-C36284

EARTH STUB 3200A-C34722

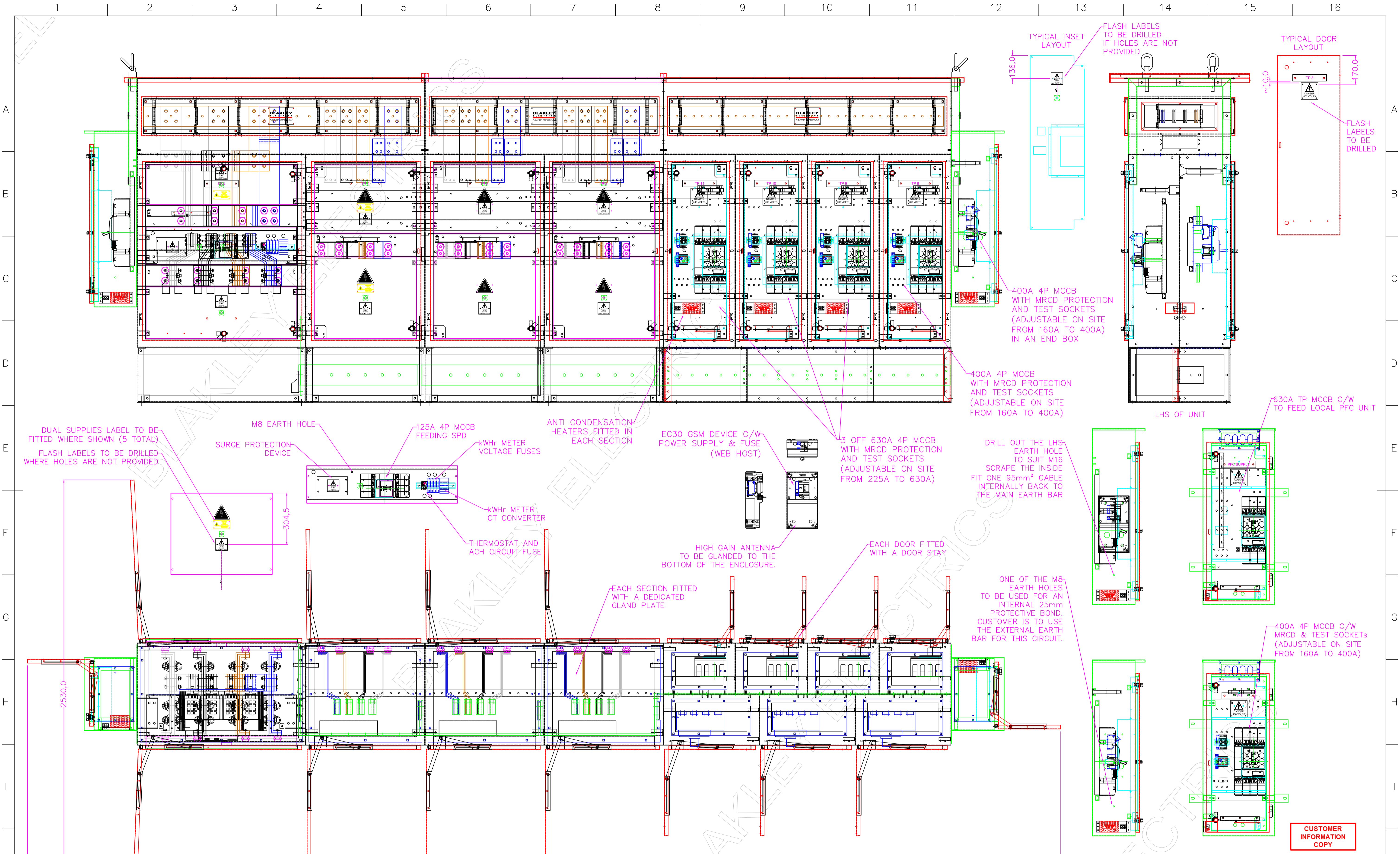
M6 SPACER

- NOTES:
- OVERALL IP RATING = IP55
 - OVERALL KA RATING TO BE 50ka FOR 1 SECOND
 - ENCLOSURE FINISH TO BE B/02 VERMILLION RED
 - STANDS AND FRAMES SUPPLIED SEPARATELY

THIS DRAWING IS THE PROPERTY AND COPYRIGHT OF BLAKLEY ELECTRICS AND MUST NOT, WITHOUT THEIR WRITTEN CONSENT, BE PASSED ON, COPIED, OR USED FOR ANY OTHER PURPOSE. THIS COPY IS UNCONTROLLED UNLESS OTHERWISE MARKED.

CUSTOMER INFORMATION COPY

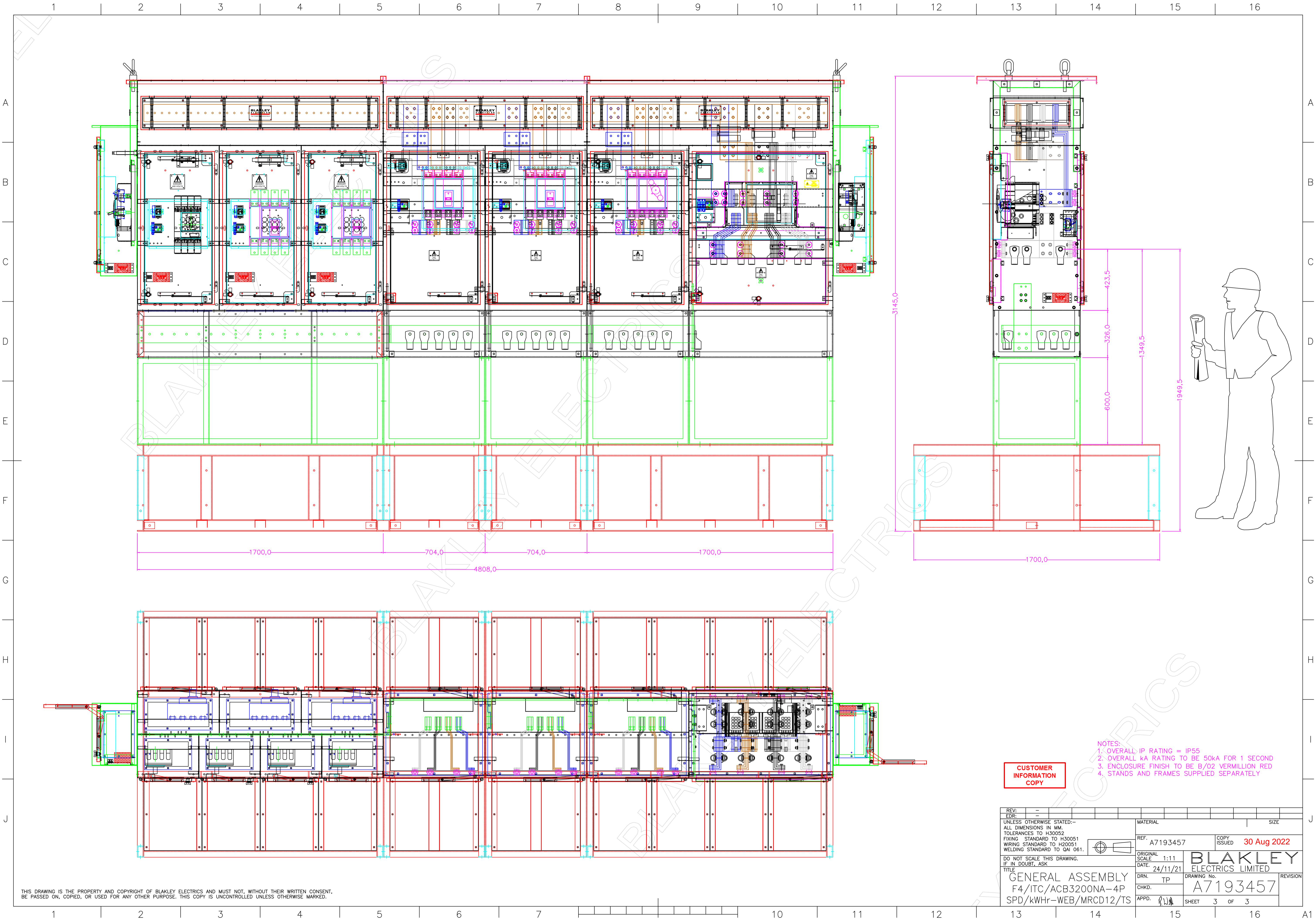
REV: -	EDR: -	MATERIAL	SIZE
UNLESS OTHERWISE STATED:- ALL DIMENSIONS IN MM TOLERANCES TO H30052			
REF: A7193457	COPY ISSUED: 30 Aug 2022	DATE: 24/11/21	
ORIGINAL SCALE: 1:10	BLAKLEY ELECTRICS LIMITED		
DO NOT SCALE THIS DRAWING. IF IN DOUBT, ASK			
TITLE: GENERAL ASSEMBLY F4/ITC/ACB3200NA-4P SPD/kWhr-WEB/MRCD12/TS	DRN: TP	DRAWING No. A7193457	REVISION
CHKD: -	APPD: -	SHEET 1 OF 3	



- NOTES:
1. OVERALL IP RATING = IP55
 2. OVERALL KA RATING TO BE 50ka FOR 1 SECOND
 3. ENCLOSURE FINISH TO BE B/02 VERMILLION RED
 4. STANDS AND FRAMES SUPPLIED SEPARATELY

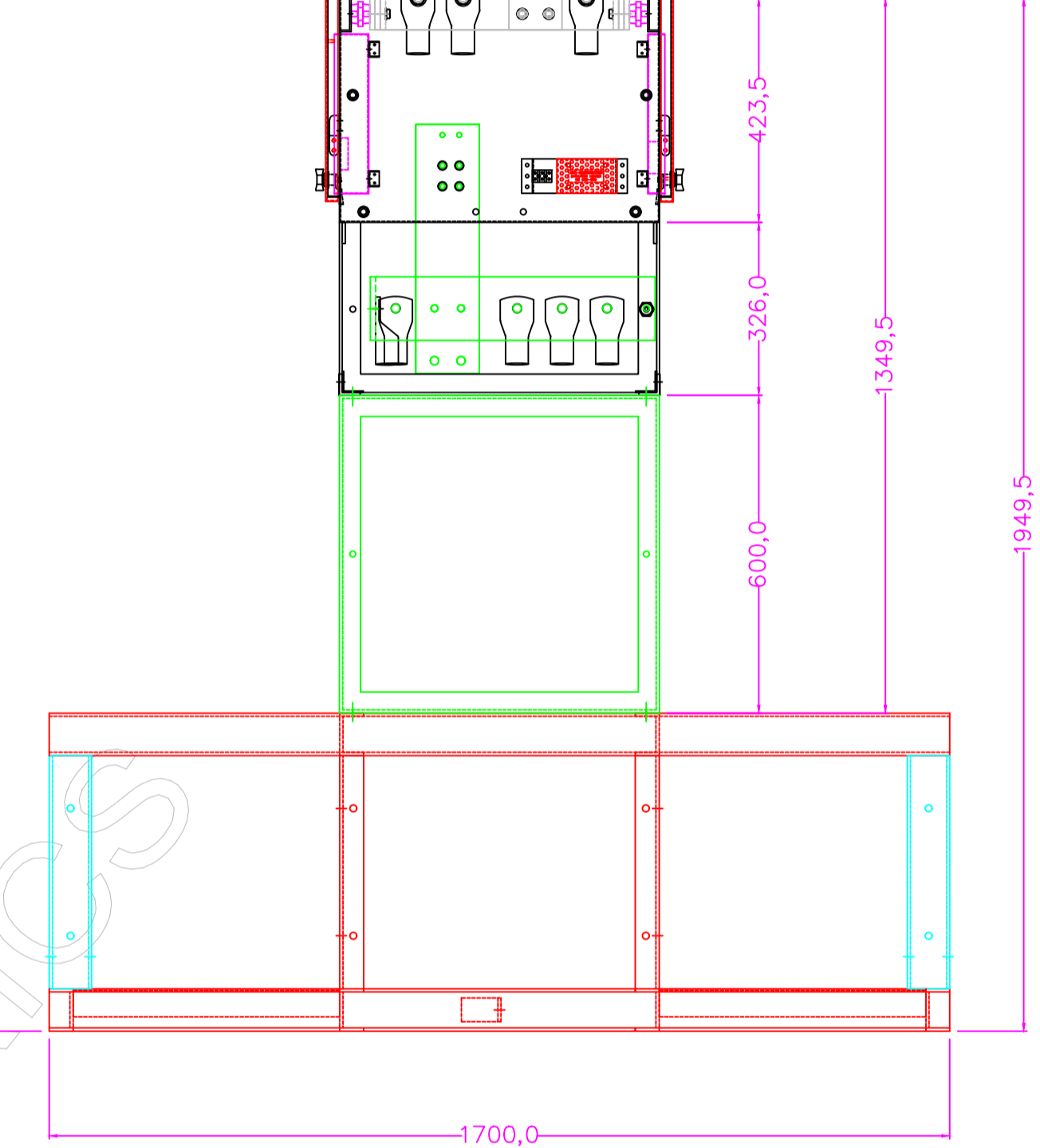
THIS DRAWING IS THE PROPERTY AND COPYRIGHT OF BLAKLEY ELECTRICS AND MUST NOT, WITHOUT THEIR WRITTEN CONSENT, BE PASSED ON, COPIED, OR USED FOR ANY OTHER PURPOSE. THIS COPY IS UNCONTROLLED UNLESS OTHERWISE MARKED.

REV: -	EDR: -	MATERIAL	SIZE
UNLESS OTHERWISE STATED:- ALL DIMENSIONS IN MM TOLERANCES TO H30052 FIXING STANDARD TO H30051 WIRING STANDARD TO H20051 WELDING STANDARD TO QAI 061.		REF: A7193457	COPY ISSUED 30 Aug 2022
DO NOT SCALE THIS DRAWING. IF IN DOUBT, ASK	ORIGINAL SCALE 1:10	DATE: 24/11/21	BLAKLEY ELECTRICS LIMITED
TITLE	DRN. TP	CHKD. A7193457	REVISION
GENERAL ASSEMBLY	F4/ITC/ACB3200NA-4P	SPD/kWhr-WEB/MRCD12/TS	APPD. (Signature)
SHEET 2 OF 3			



1700,0 704,0 704,0 1700,0 4808,0

3145,0



423,5
326,0
1349,5
600,0
1949,5

CUSTOMER INFORMATION COPY

- NOTES:
1. OVERALL IP RATING = IP55
 2. OVERALL KA RATING TO BE 50kA FOR 1 SECOND
 3. ENCLOSURE FINISH TO BE B/02 VERMILLION RED
 4. STANDS AND FRAMES SUPPLIED SEPARATELY

REV: -	EDR: -	MATERIAL	SIZE
UNLESS OTHERWISE STATED:- ALL DIMENSIONS IN MM TOLERANCES TO H30052 FIXING STANDARD TO H30051 WIRING STANDARD TO H20051 WELDING STANDARD TO QAI 061.		REF: A7193457	COPY ISSUED 30 Aug 2022
DO NOT SCALE THIS DRAWING. IF IN DOUBT, ASK		ORIGINAL SCALE 1:11	DATE 24/11/21
TITLE GENERAL ASSEMBLY F4/ITC/ACB3200NA-4P SPD/kWhr-WEB/MRCD12/TS		DRN. TP	CHKD. A7193457
		APPD. (Signature)	SHEET 3 OF 3

THIS DRAWING IS THE PROPERTY AND COPYRIGHT OF BLAKLEY ELECTRICS AND MUST NOT, WITHOUT THEIR WRITTEN CONSENT, BE PASSED ON, COPIED, OR USED FOR ANY OTHER PURPOSE. THIS COPY IS UNCONTROLLED UNLESS OTHERWISE MARKED.