

IDENT LABEL (M4 FIXINGS)
(LABEL PROVIDED BY OTHERS)

1 OFF FUSEBANK
20A 8 WAY

PADLOCK HASP

KEY LOCK

NEUTRAL BAR

EARTH BAR

1x M8

8x M6

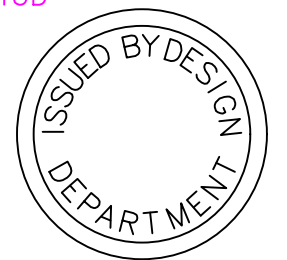
DOOR CROSSBOND

SELF ADHESIVE CIRCUIT DESIGNATION
LABEL SUPPLIED WITH FUSEBANK
TO BE FIXED TO BACK OF DOOR
ADJACENT TO FUSEBANK.

VIEW SHOWING RATING PLATE & LABEL POSITIONS
ON THE DOOR

DOCUMENT POCKET ON REAR
OF DOOR

M10 EXTERNAL EARTH STUD



REV:	A	B	C												
EDR:	6071	6903	6980												
UNLESS OTHERWISE STATED:- ALL DIMENSIONS IN MM. TOLERANCES TO H30052 FIXING STANDARD TO H30051 WIRING STANDARD TO H20051 WELDING STANDARD TO QAI 61.										MATERIAL		SIZE			
DO NOT SCALE THIS DRAWING. IF IN DOUBT, ASK										REF. S060943		COPY ISSUED			
TITLE GENERAL ASSEMBLY FB/1N/20/8W SELLAFIELD SITES										ORIGINAL SCALE 1:4					
										DATE 22.11.16					
										DRN. B.JONES					
										CHKD.					
										APPD.		SHEET 1 OF 1			

THIS DRAWING IS THE PROPERTY AND COPYRIGHT OF BLAKLEY ELECTRICS AND MUST NOT, WITHOUT THEIR WRITTEN CONSENT, BE PASSED ON, COPIED, OR USED FOR ANY OTHER PURPOSE.