

CCB FIXING HOLES ARE TO BE POPULATED WITH M6 NUSERTS. THE NUSERTS SHOULD BE GREASED.FOLLOWING FIXINGS SUPPLIED:- M6 X 20MM HEX HD SCREWS TO EMS H30051 FIG.2.

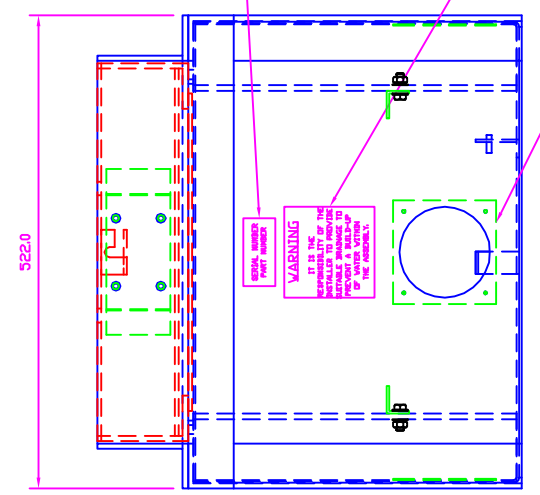
LIFT OUT LID B22630

CABLE CLAMP E22632 SECURED WITH 4 OFF M5 X 16MM LG CSK SCREWS TO EMS H30051 FIG.4

WARNING LABEL MUST BE ADHERED INSIDE AND OUTSIDE ENCLOSURE.

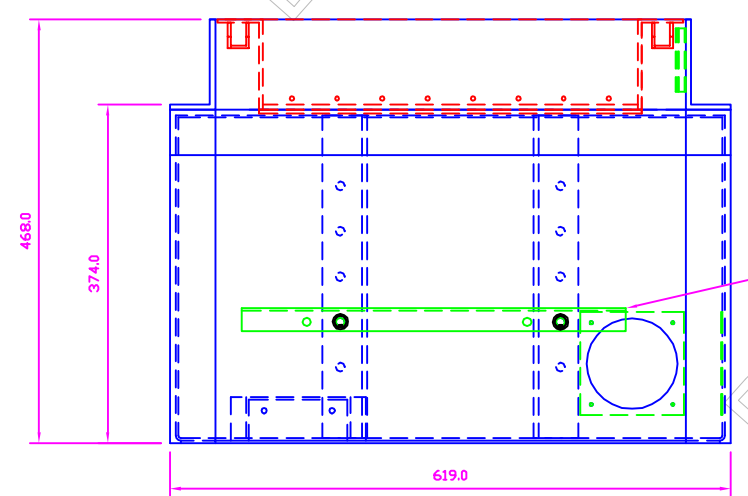
RATING PLATE LABEL TO BE ADHERED IN THIS POSITION

BLANKING PLATE E14648 TO BE SECURED TO THE INSIDE OF THE ENCLOSURE USING 4 OFF 3.2MM DIA RIVETS



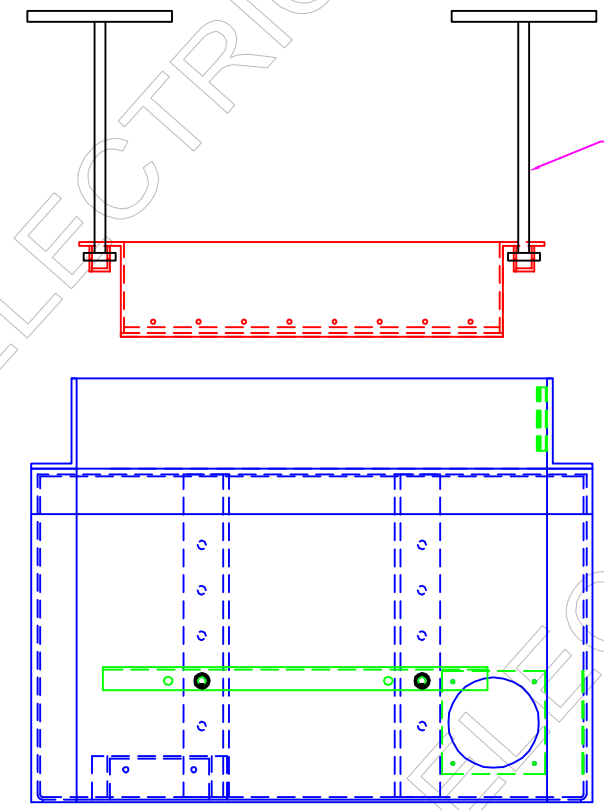
NOTES:-

- 1) PLEASE ENSURE ALL SHARP CORNERS ARE REMOVED FROM THE GALVANIZING PROCESS, IF ANY BARE METAL IS EXPOSED IT SHOULD BE PAINTED WITH GALVAFROID.
- 2) PLEASE ENSURE THAT THE LID IS FITTED SQUARE AND OPENS AND CLOSES SMOOTHLY. IF ANY GALVANIZING IS TO BE REMOVED FROM THE OPERATING RADIUS OF THE LID PLEASE DO THIS BEFORE BUILDING THE UNITS UP COMPLETELY.
- 3) ALL FIXINGS AND FIXTURES TO BE STAINLESS STEEL WHERE POSSIBLE, ALUMINIUM RIVETS TO BE USED.



VIEW WITH LID IN PLACE

ANGLES SECURED TO ENCLOSURE WITH 4 OFF M8 X 25MM LG HEX HD BOLTS TO EMS H30051 FIG.4



VIEW WITH LID REMOVED

GMDA LIFTING KEY S120303

CUSTOMER INFORMATION COPY



REV:	A	B	C												
EDR:	6064	6443	6576												
UNLESS OTHERWISE STATED:- ALL DIMENSIONS IN MM. TOLERANCES TO H30052 FIXING STANDARD TO H30051 WIRING STANDARD TO H20051 WELDING STANDARD TO QAI 61.										MATERIAL		MILD STEEL			
DO NOT SCALE THIS DRAWING. IF IN DOUBT, ASK										REF.		COPY ISSUED			
TITLE										ORIGINAL SCALE		1:6			
ENCLOSURE DETAILS										DATE		07.07.15			
GIFA										DRN.		JET			
GIFA/LL/SD/2W										CHKD.		B23664			
										APPD.		SHEET 1 OF 5			
										DRAWING No.		REVISION			
												C			