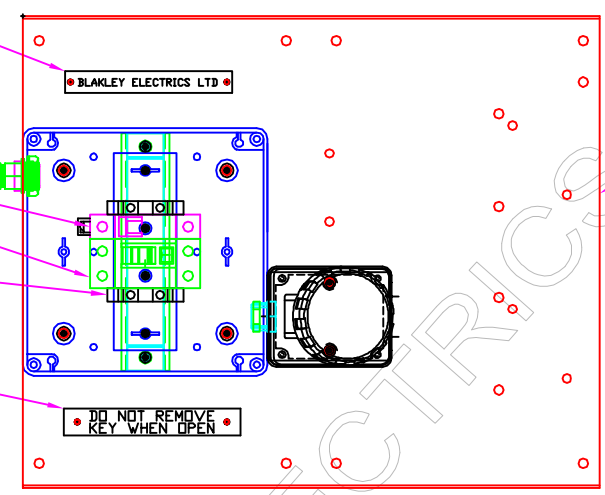


- 1 OFF LABEL ENG035/4
SECURED WITH 2 OFF 3.2MM RIVETS
- 1 OFF M20 CABLE GLAND.
1 OFF M20 LOCKNUT.
- 1 OFF MCB SP 16A.
- 1 OFF RCCD 25A 30mA DP
- 2 OFF EARTH TERMINAL EK10/35
- 1 OFF LABEL - E10410
SECURED WITH 2 OFF 3.2MM RIVETS

VIEW WITH WINDOW REMOVED.

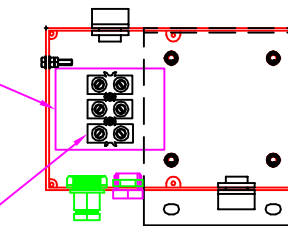


1 OFF SOCKET PLATE - C22631

1 OFF CCB VYBAK SHIELD - E13292

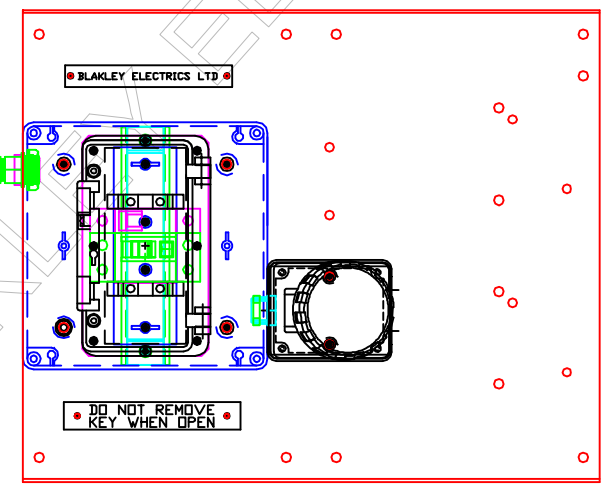
1 OFF TERMINAL BLOCK
SECURED WITH 2 OFF
M3 X 25MM LG POZI PAN HD
SCREWS TO EMS H30051 FIG.1

VIEW WITH LID REMOVED.

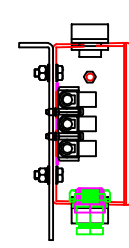


1 OFF M20 CABLE GLAND.
1 OFF WINDOW SPACER
E13314-6

1 OFF M20 X 1.5
BLANKING PLUG.

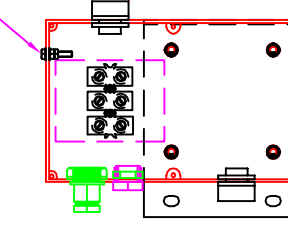


1 OFF M20 X 1.5
CLAMPING BUSH



M5 X 20MM
LG HEX HD
BRASS EARTH
BOLT TO EMS
H30051 FIG.11.

2 OFF BREATHER.

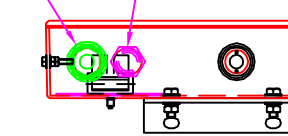


1 OFF WINDOW - 8 WAY
SECURED WITH 6 OFF POZI PAN HD
4.2 X 13MM LG ST SCREWS.

1 OFF M20 X 1.5 BLANKING PLUG.
1 OFF M20 LOCKNUT.

1 OFF M20 CABLE GLAND.
1 OFF M20 LOCKNUT.

1 OFF IP65 ENCLOSURE E13265
SECURED TO BRACKET USING
4 OFF M6 X 16MM LG HEX HD
SCREWS TO EMS H300051 FIG.4



1 OFF CCB PLATE - E13257

1 OFF ENCLOSURE - C13259-1
SECURED WITH:-
3 OFF M5 X 16MM LG POZI
PAN HD SCREWS
TO EMS H30051 FIG.6
1 OFF M6 X 35MM LG
BRASS EARTH BOLT
TO EMS H30051 FIG.16
CONNECTED TO
EK10 EARTH TERMINAL.

1 OFF 16A SOCKET

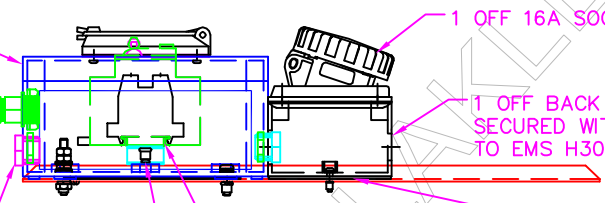
1 OFF BACK BOX
SECURED WITH M4 POZI PAN HD SCREWS
TO EMS H30051 FIG.6

1 OFF SHIM PLATE - E27589

1 OFF DIN RAIL - E10319
SECURED TO BRACKET
WITH 2 OFF M5 X 16MM LG
POZI CSK HD SCREWS.

1 OFF DIN RAIL BRACKET - E10320
SECURED WITH 4OFF POZI
PAN HD NO.8 X 3/8 ST SCREWS.

1 OFF M20 X 1.5 BLANKING PLUG.
1 OFF M20 LOCKNUT.



CABLE CHANGE BOX ASSEMBLY.

16AMP 110V OR 240V
1 WAY GIFA SOCKET PLATE
LIFT OU LID.

THIS DRAWING IS THE PROPERTY AND COPYRIGHT OF BLAKLEY ELECTRICS AND MUST NOT, WITHOUT THEIR WRITTEN CONSENT, BE PASSED ON, COPIED, OR USED FOR ANY OTHER PURPOSE. THIS COPY IS UNCONTROLLED UNLESS OTHERWISE MARKED.

REV: A	EDR: 6553	MATERIAL: MILD STEEL		SIZE:
UNLESS OTHERWISE STATED:- ALL DIMENSIONS IN MM. TOLERANCES TO H30052 FIXING STANDARD TO H30051 WIRING STANDARD TO H20051 WELDING STANDARD TO QAI 61.		REF.:	COPY ISSUED	
DO NOT SCALE THIS DRAWING. IF IN DOUBT, ASK		ORIGINAL SCALE: 1:4	BLAKLEY ELECTRICS LIMITED	
TITLE: SOCKET ASSEMBLY & CABLE CHANGE BOX GFA/OC/RCD/230/S1-16		DATE: 14.05.15	DRAWING No. B23664	REVISION: A
DRN. JET	CHKD.	SHEET 2 OF 5		