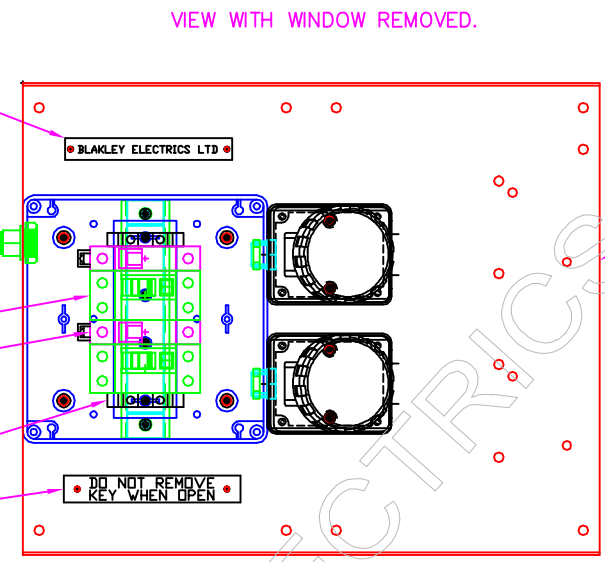
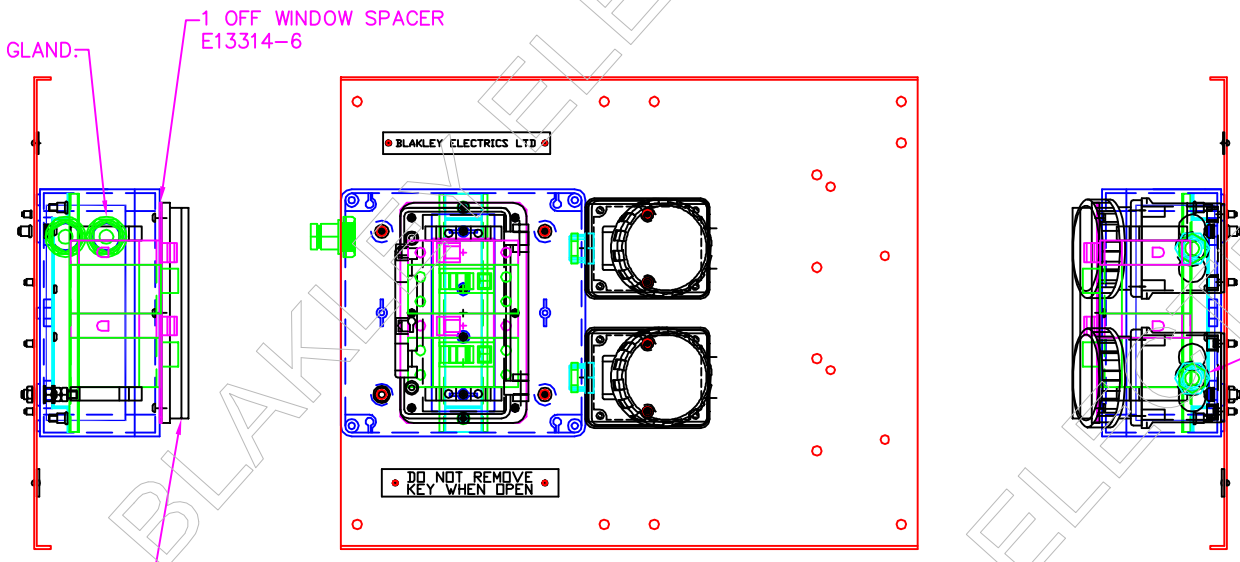


- 1 OFF LABEL ENG035/4  
SECURED WITH 2 OFF 3.2MM RIVETS
- 2 OFF M20 CABLE GLAND.  
2 OFF M20 LOCKNUT.
- 2 OFF RCCD 25A 30mA DP
- 2 OFF MCB SP 16A.
- 2 OFF EARTH TERMINAL EK10/35
- 1 OFF LABEL - E10410  
SECURED WITH 2 OFF 3.2MM RIVETS



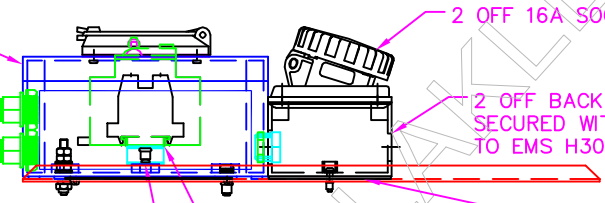
1 OFF SOCKET PLATE - C22631

- 2 OFF M20 CABLE GLAND.
- 1 OFF WINDOW SPACER  
E13314-6
- 1 OFF WINDOW - 8 WAY  
SECURED WITH 6 OFF POZI PAN HD  
4.2 X 13MM LG ST SCREWS.



2 OFF M20 X 1.5  
CLAMPING BUSH

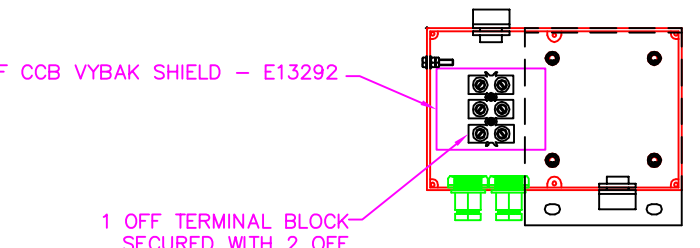
- 1 OFF ENCLOSURE - C13259-1  
SECURED WITH:-  
3 OFF M5 X 16MM LG POZI  
PAN HD SCREWS  
TO EMS H30051 FIG.6  
1 OFF M6 X 35MM LG  
BRASS EARTH BOLT  
TO EMS H30051 FIG.16  
CONNECTED TO  
EK10 EARTH TERMINAL.



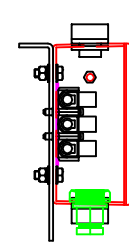
- 2 OFF 16A SOCKET
- 2 OFF BACK BOX  
SECURED WITH M4 POZI PAN HD SCREWS  
TO EMS H30051 FIG.6
- 2 OFF SHIM PLATES - E27589
- 1 OFF DIN RAIL - E10319  
SECURED TO BRACKET  
WITH 2 OFF M5 X 16MM LG  
POZI CSK HD SCREWS.
- 1 OFF DIN RAIL BRACKET - E10320  
SECURED WITH 4OFF POZI  
PAN HD NO.8 X 3/8 ST SCREWS.

16AMP 110V OR 240V  
2 WAY GIFA SOCKET PLATE  
LIFT OU LID.

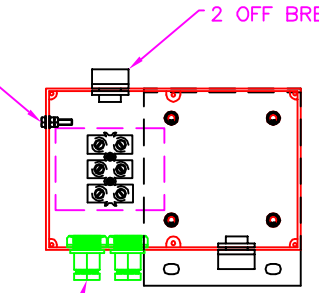
1 OFF CCB VYBAK SHIELD - E13292



VIEW WITH LID REMOVED.

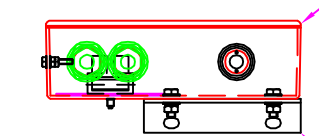


M5 X 20MM  
LG HEX HD  
BRASS EARTH  
BOLT TO EMS  
H30051 FIG.11.



2 OFF BREATHER.

2 OFF M20 CABLE GLAND.  
2 OFF M20 LOCKNUT.



1 OFF IP65 ENCLOSURE - E13265  
SECURED TO BRACKET USING  
4 OFF M6 X 16MM LG HEX HD SCREWS  
TO EMS H300051 FIG.4

1 OFF CCB PLATE - E13257

CABLE CHANGE BOX ASSEMBLY.

THIS DRAWING IS THE PROPERTY AND COPYRIGHT OF BLAKLEY ELECTRICS AND MUST NOT, WITHOUT THEIR WRITTEN CONSENT, BE PASSED ON, COPIED, OR USED FOR ANY OTHER PURPOSE. THIS COPY IS UNCONTROLLED UNLESS OTHERWISE MARKED.

REV: A	EDR: 6553	UNLESS OTHERWISE STATED:- ALL DIMENSIONS IN MM. TOLERANCES TO H30052 FIXING STANDARD TO H30051 WIRING STANDARD TO H20051 WELDING STANDARD TO QAI 61.		MATERIAL	MILD STEEL	SIZE	
DO NOT SCALE THIS DRAWING. IF IN DOUBT, ASK				REF.	COPY ISSUED		
TITLE				ORIGINAL SCALE	1:4	BLAKLEY ELECTRICS LIMITED	
SOCKET ASSEMBLY & CABLE CHANGE BOX GFA/OC/RCD/230/S2-16				DATE:	14.05.15	DRAWING No.	B23664
				DRN.	JET	REVISION	A
				CHKD.		SHEET 3 OF 5	
				APPD.			