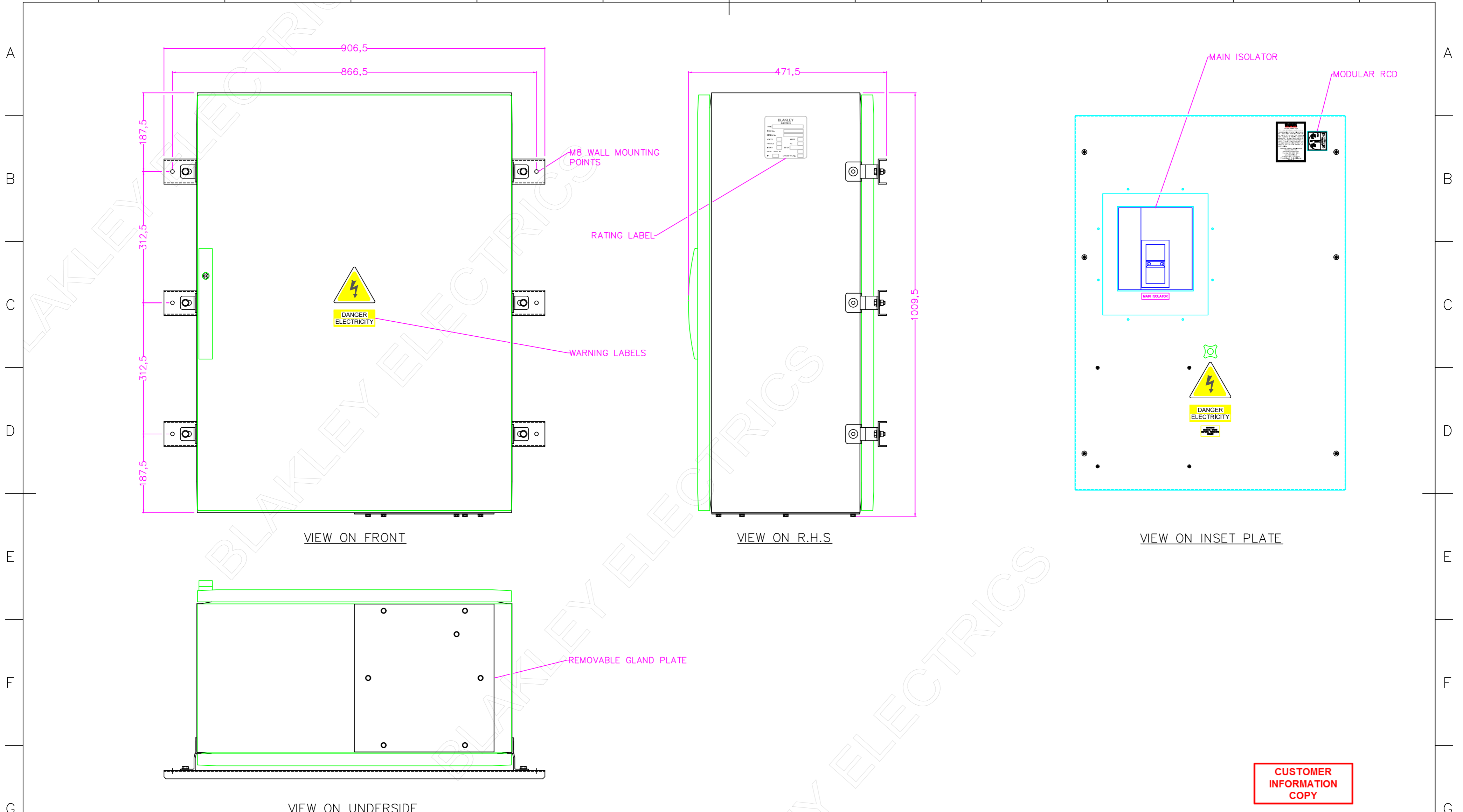


1 2 3 4 5 6 7 8 9 10 11 12



CUSTOMER INFORMATION COPY

NOTES:
 GRP ENCLOSURE
 INCOMER TERMINATION DISTANCE – 425mm
 INCOMER MAX CABLE ACCEPTANCE – M16 LUG CONNECTION MAX PALM WIDTH 45mm
 IP RATING – IP54

THIS DRAWING IS THE PROPERTY AND COPYRIGHT OF BLAKLEY ELECTRICS AND MUST NOT, WITHOUT THEIR WRITTEN CONSENT, BE PASSED ON, COPIED, OR USED FOR ANY OTHER PURPOSE. THIS COPY IS UNCONTROLLED UNLESS OTHERWISE MARKED.

REV: A															
EDR: 8449															
UNLESS OTHERWISE STATED:- ALL DIMENSIONS IN MM. EWM REFERS TO ENGINEERING & WORKSHOP MANUAL TOLERANCES TO EWM SECTION 3.1.3 FIXING STD TO EWM APPENDIX D. WIRING STD EWM SECTION 4. WELDING STANDARD TO QAI 061.										MATERIAL		BASED ON			
DO NOT SCALE THIS DRAWING. IF IN DOUBT, ASK										REF. S010146R		COPY ISSUED 07 Feb 2023			
TITLE GENERAL ASSEMBLY ARC 800A										ORIGINAL SCALE 1:6 DATE 03/02/23					
										DRN. PR		DRAWING No. B32439		REVISION A	
										CHKD.					
										APPD. [Signature]					

1 2 3 4 5 6 7 8 9 10 11 12 A2