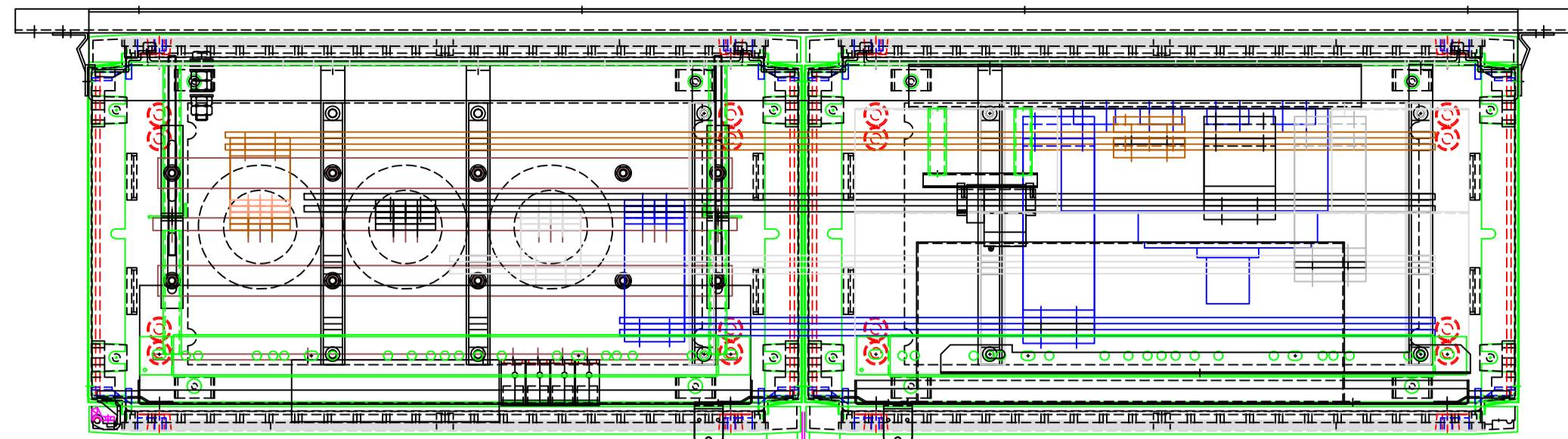
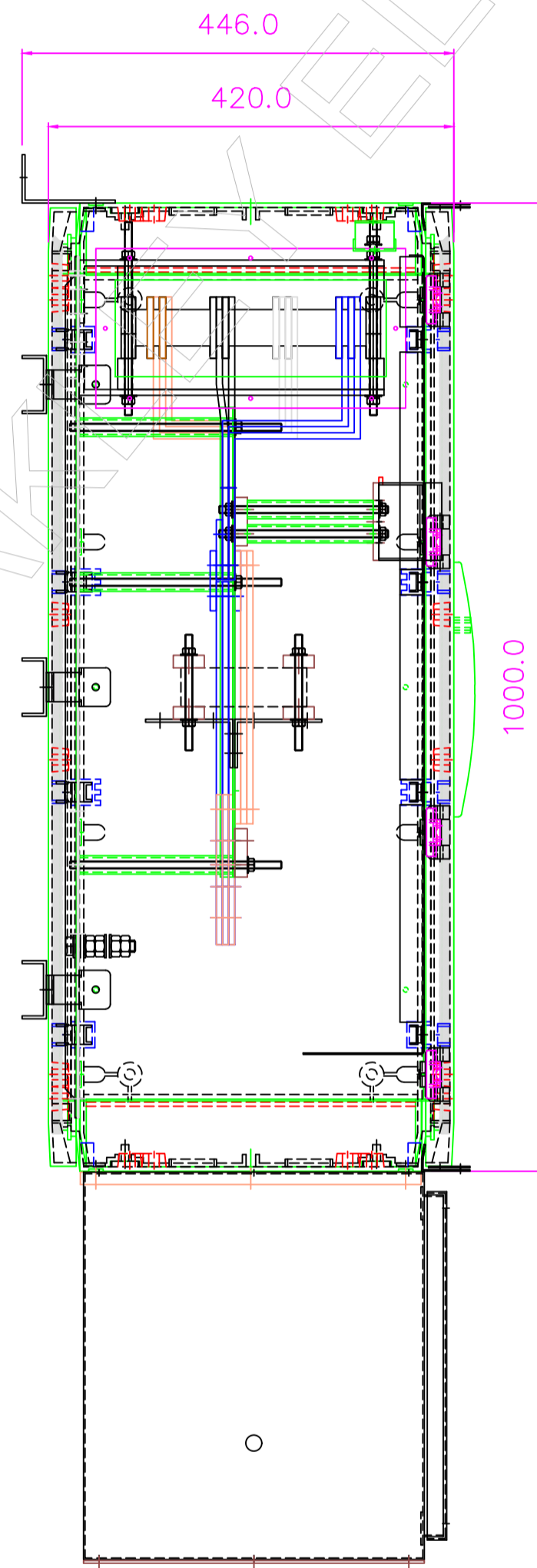


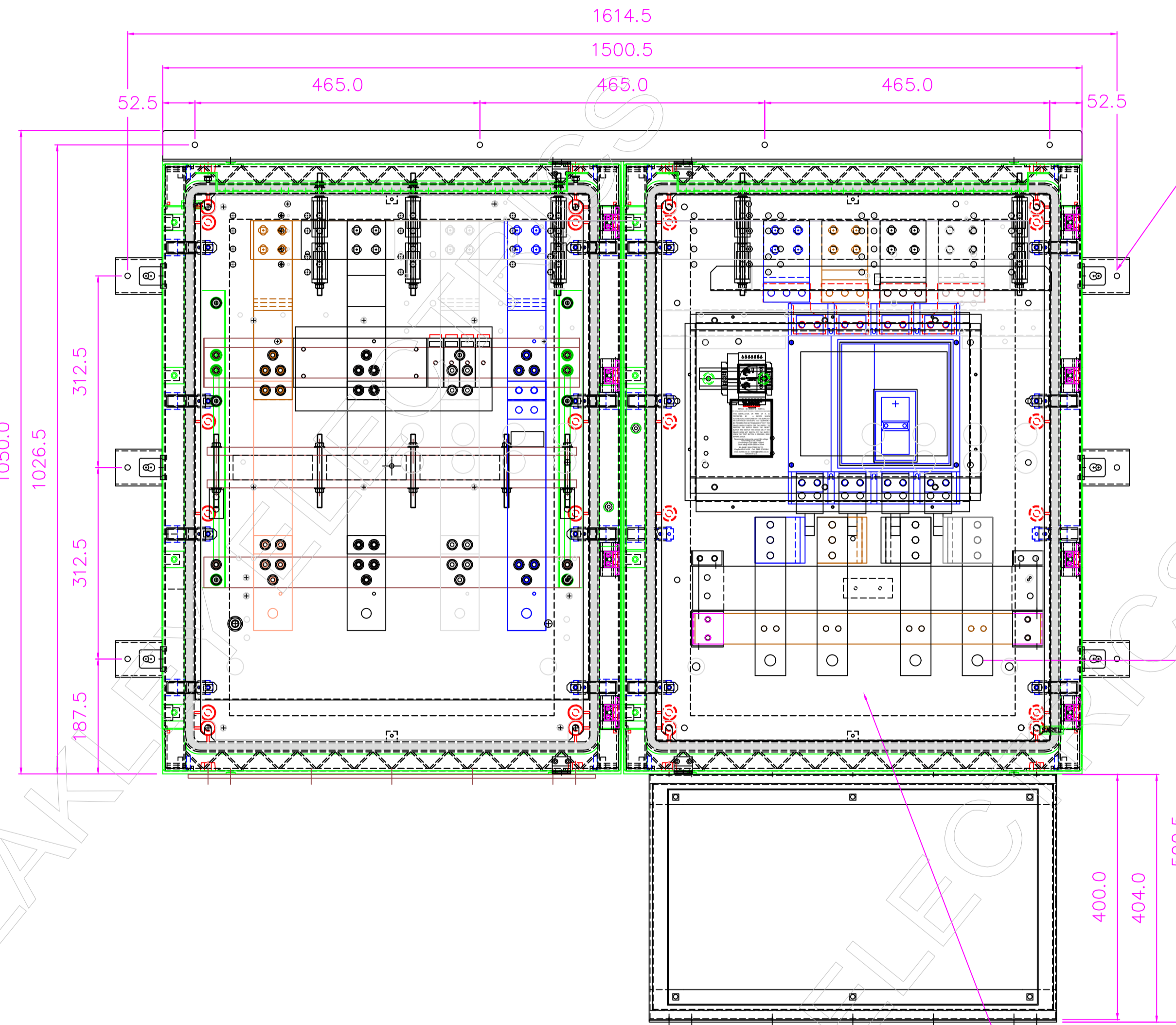
NOTES:  
 1. REFER TO SHEET 2 FOR ADDITIONAL ASSEMBLY DETAILS  
 2. TYPICAL IP RATING OF ASSEMBLY – IP55



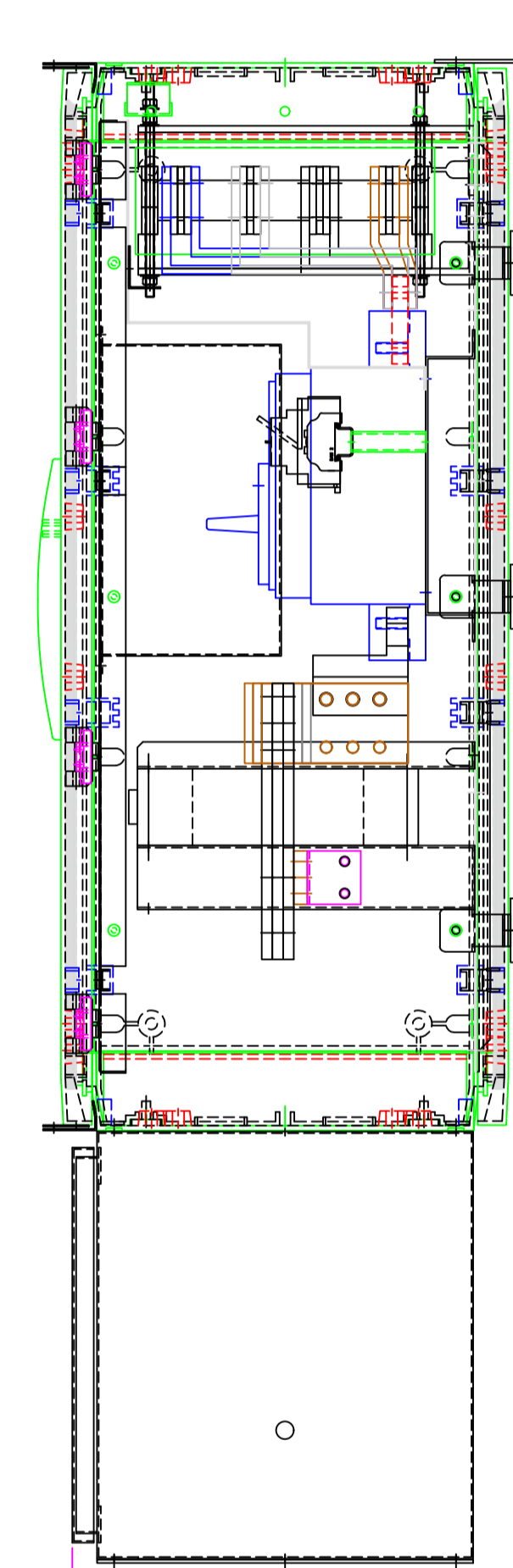
100.0 REF. VIEW ON TOP 100.0 REF.



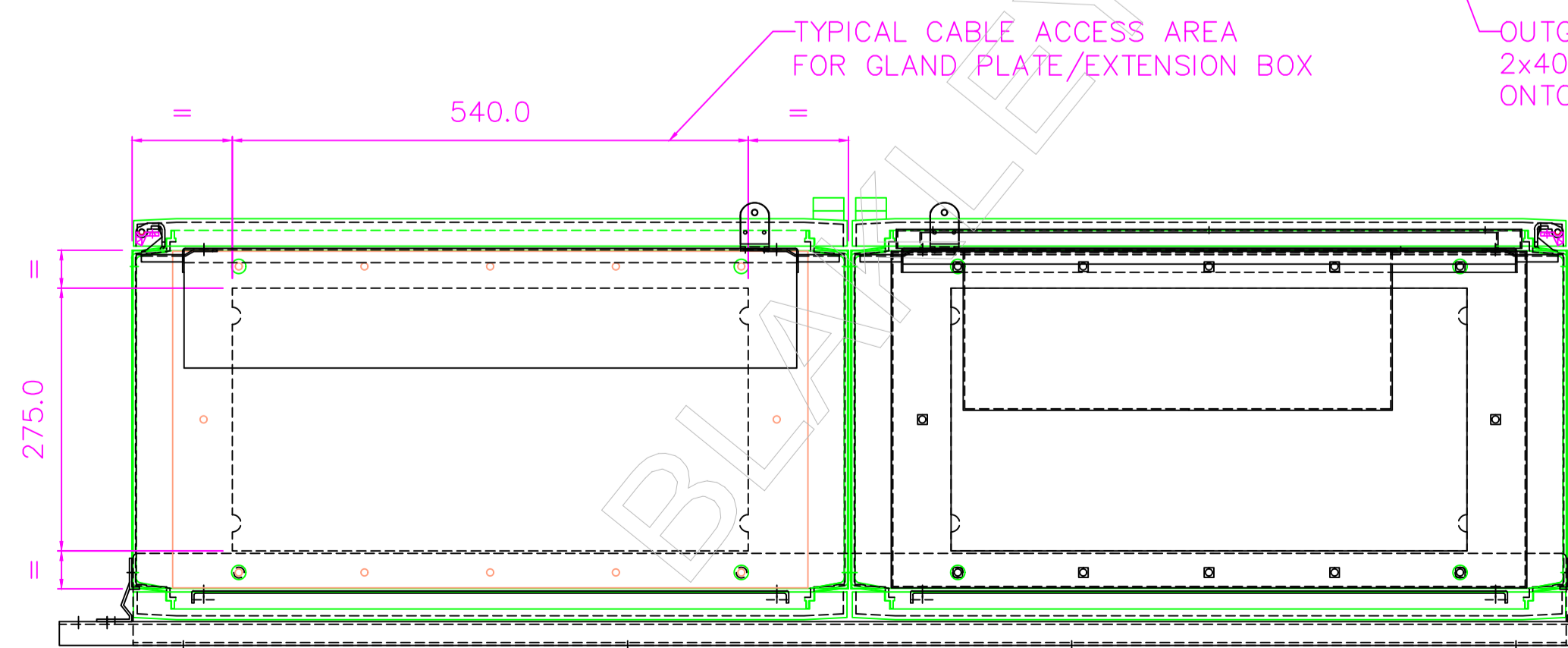
VIEW ON L.H.S



VIEW ON FRONT



VIEW ON R.H.S



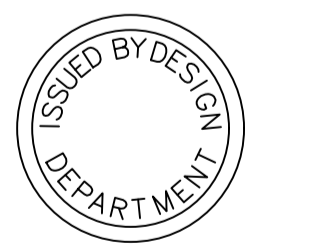
VIEW ON UNDERSIDE

10x M8 FIXING POINTS

OUTGOING CABLE SIZE MAXIMUM  
 2x400mm SQ PER PHASE & NEUTRAL  
 ONTO M12 STUDS

TYPICAL CABLE ACCESS AREA  
 FOR GLAND PLATE/EXTENSION BOX

CUSTOMER  
 INFORMATION  
 COPY



BASED ON A20514

REV: A	EDR: 7682	MATERIAL	SIZE
UNLESS OTHERWISE STATED-- ALL DIMENSIONS IN MM. TOLERANCES TO H30052 FIXING STANDARD TO H30051 WIRING STANDARD TO H20051 WELDING STANDARD TO QAI 61.		REF. S031015R	COPY ISSUED
DO NOT SCALE THIS DRAWING. IF IN DOUBT, ASK		ORIGINAL SCALE 1:6	DATE 23/05/19
TITLE GENERAL ASSEMBLY CTC/ARC/MRCD1600/LR		DRN. A.H	DRAWING No. B32932
		CHKD.	REVISION A
		APPD.	SHEET 1 OF 2