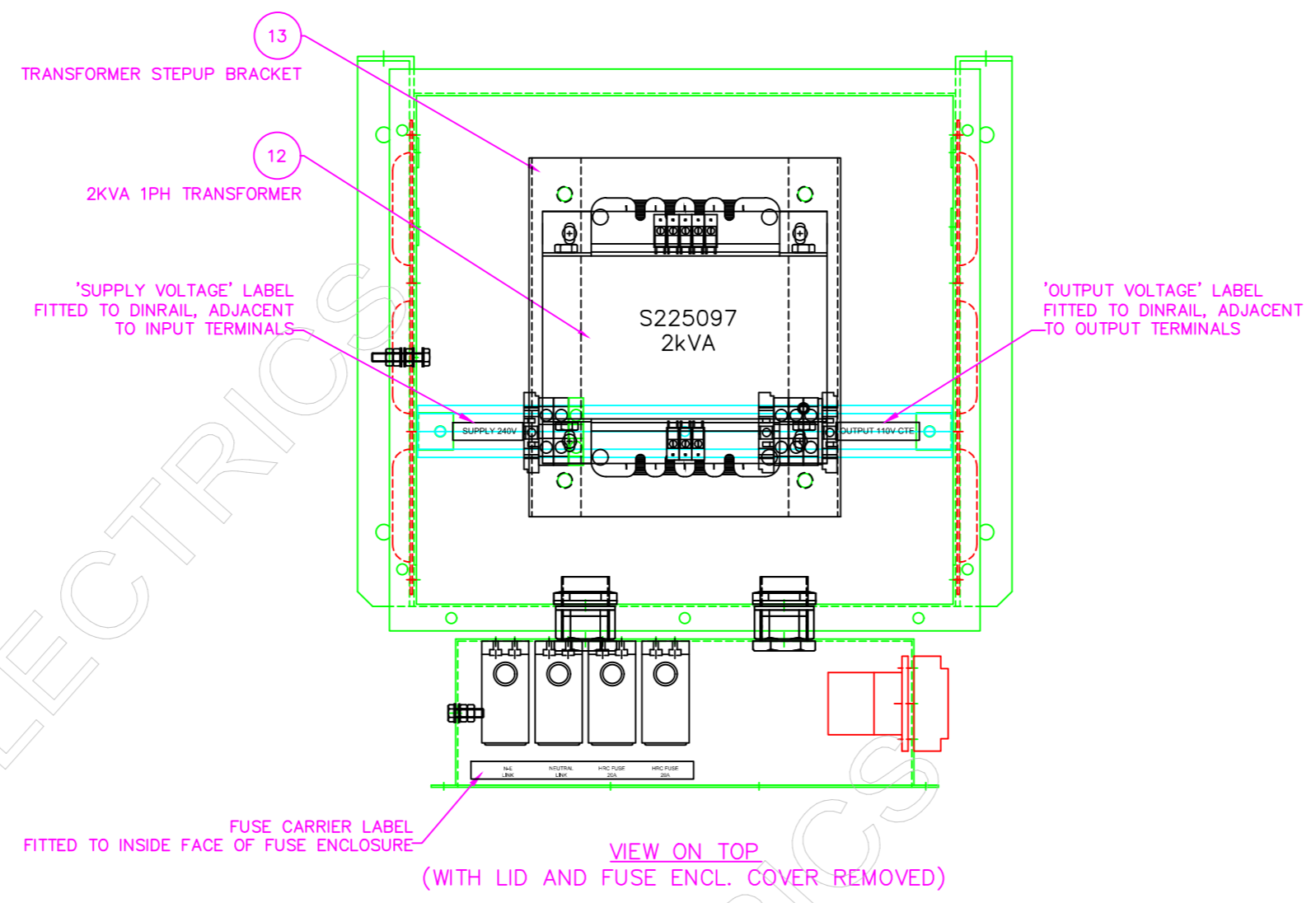


1 2 3 4 5 6 7 8 9 10 11 12

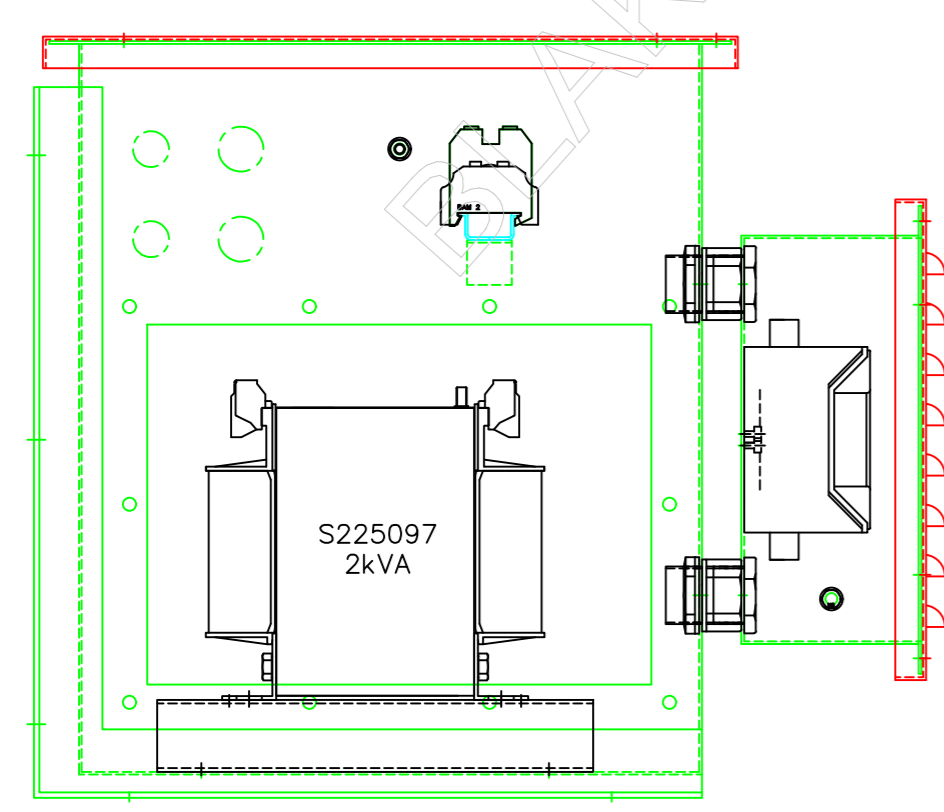
A
B
C
D
E
F
G
H

A
B
C
D
E
F
G
H

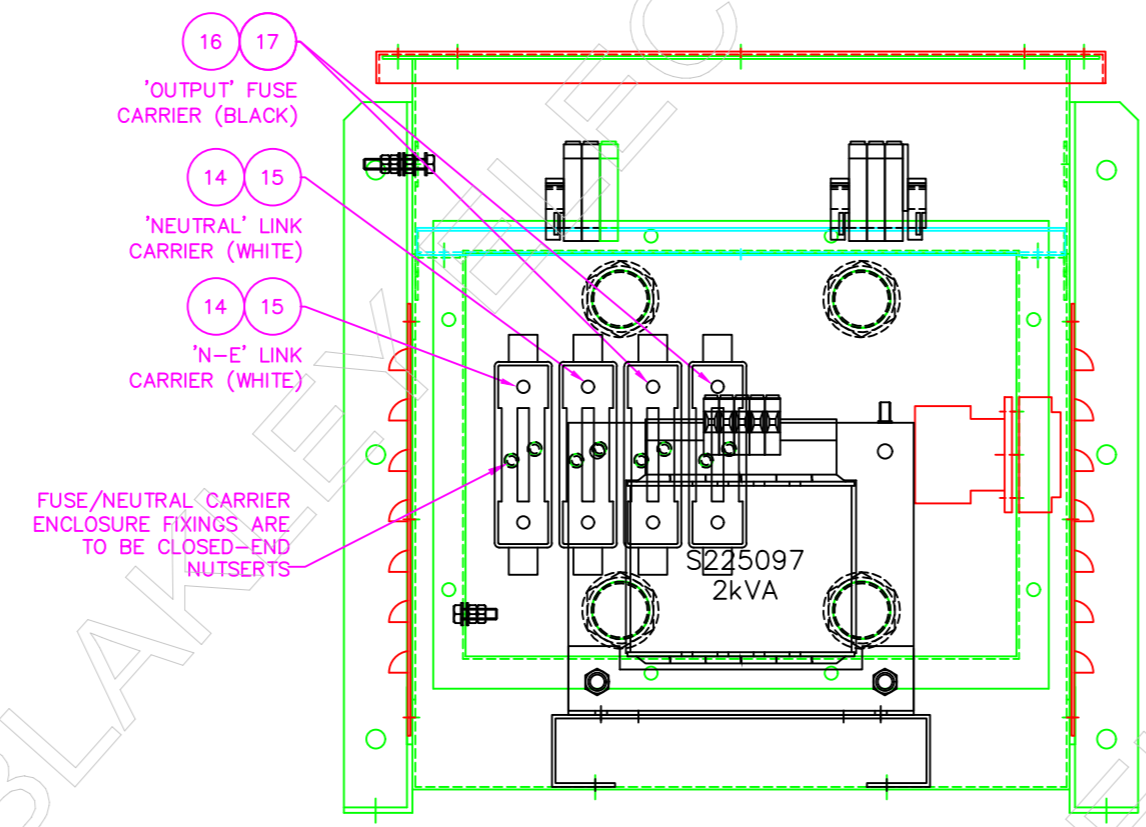


NOTES:

- DRAWING SHOWS MAIN ASSEMBLY DETAILS.
- REFER TO SHEET 1 'ITEM LIST TABLE', FOR DETAILS OF ITEMS SHOWN WITH NUMBER BALLOONS.
- REFER TO SHEET 1 FOR EXTERIOR DETAILS AND ADDITIONAL INFORMATION.



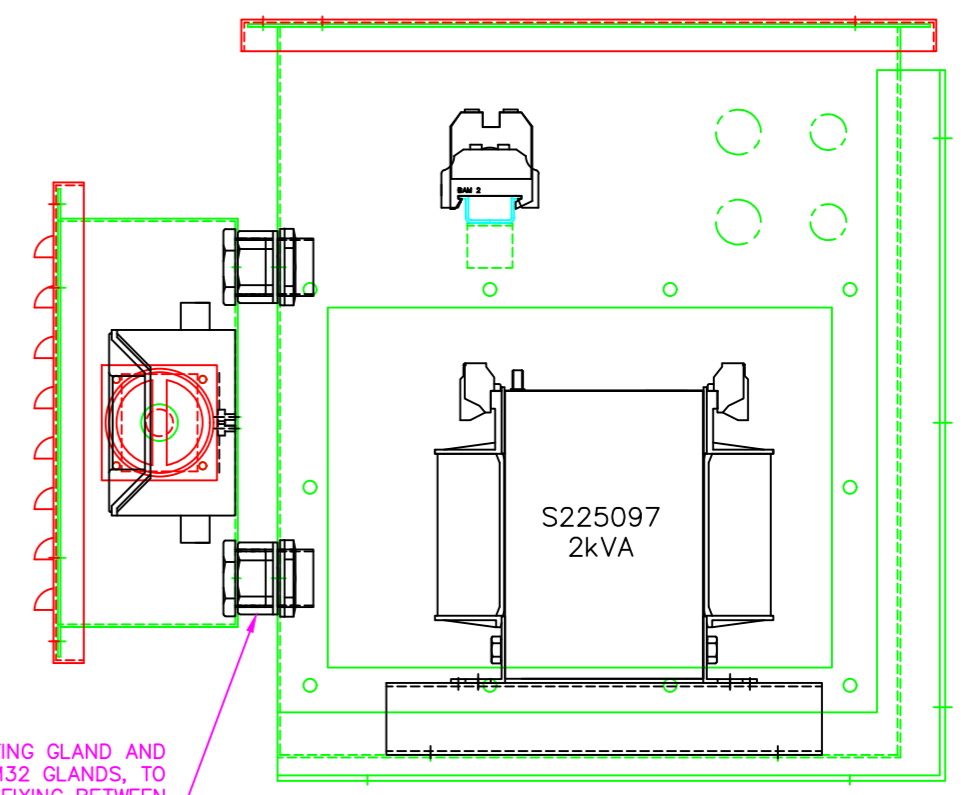
VIEW ON L.H.S
(WITH SIDE COVER AND MESH REMOVED)



VIEW ON FRONT
(WITH FUSE ENCL. COVER AND MESH REMOVED)

**CUSTOMER
INFORMATION
COPY**

REMOVE STUFFING GLAND AND WASHER FROM M32 GLANDS, TO ENSURE A SECURE FIXING BETWEEN THE ENCLOSURES IS ACHIEVED



VIEW ON R.H.S
(WITH SIDE COVER AND MESH REMOVED)

THIS DRAWING IS THE PROPERTY AND COPYRIGHT OF BLAKLEY ELECTRICS AND MUST NOT, WITHOUT THEIR WRITTEN CONSENT, BE PASSED ON, COPIED, OR USED FOR ANY OTHER PURPOSE. THIS COPY IS UNCONTROLLED UNLESS OTHERWISE MARKED.

REV: -																				
EDR: -																				
UNLESS OTHERWISE STATED:- ALL DIMENSIONS IN MM. EWM REFERS TO ENGINEERING & WORKSHOP MANUAL TOLERANCES TO EWM SECTION 3.1.3 FIXING STD TO EWM APPENDIX D. WIRING STD EWM SECTION 4. WELDING STANDARD TO QAI 061.												MATERIAL		BASED ON						
DO NOT SCALE THIS DRAWING. IF IN DOUBT, ASK												REF. S210410	COPY ISSUED 12 Sep 2022							
TITLE												ORIGINAL SCALE 1:4	BLAKLEY ELECTRICS							
GENERAL ASSEMBLY FOR TH/1/2/240-110/CTE SELLAFIELD												DATE 20.04.22			DRAWING No. B36728					
												DRN. B.W.	REVISION							
												CHKD.								
												APPD. <i>[Signature]</i>	SHEET 2 OF 2							

1 2 3 4 5 6 7 8 9 10 11 12 A2