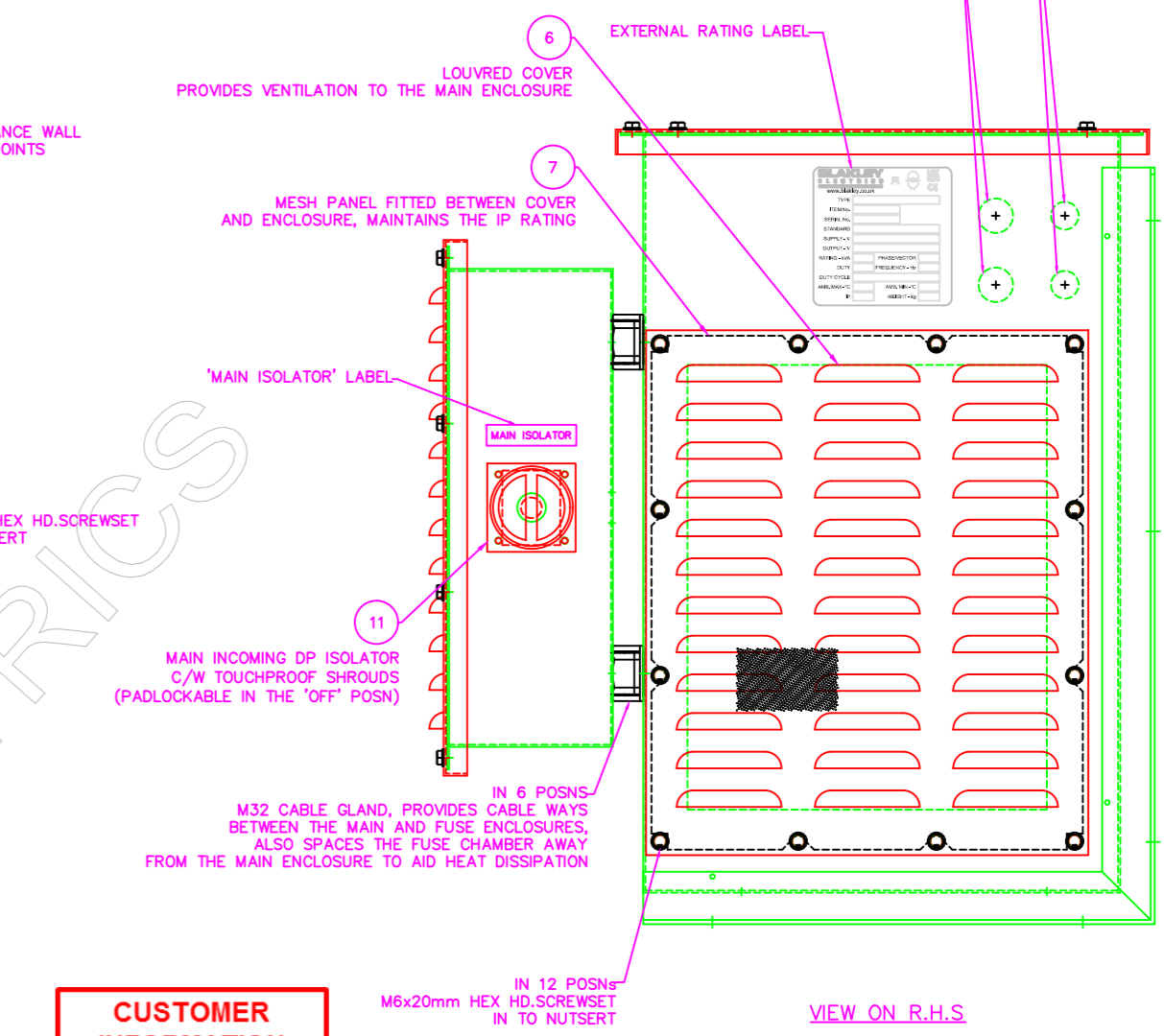
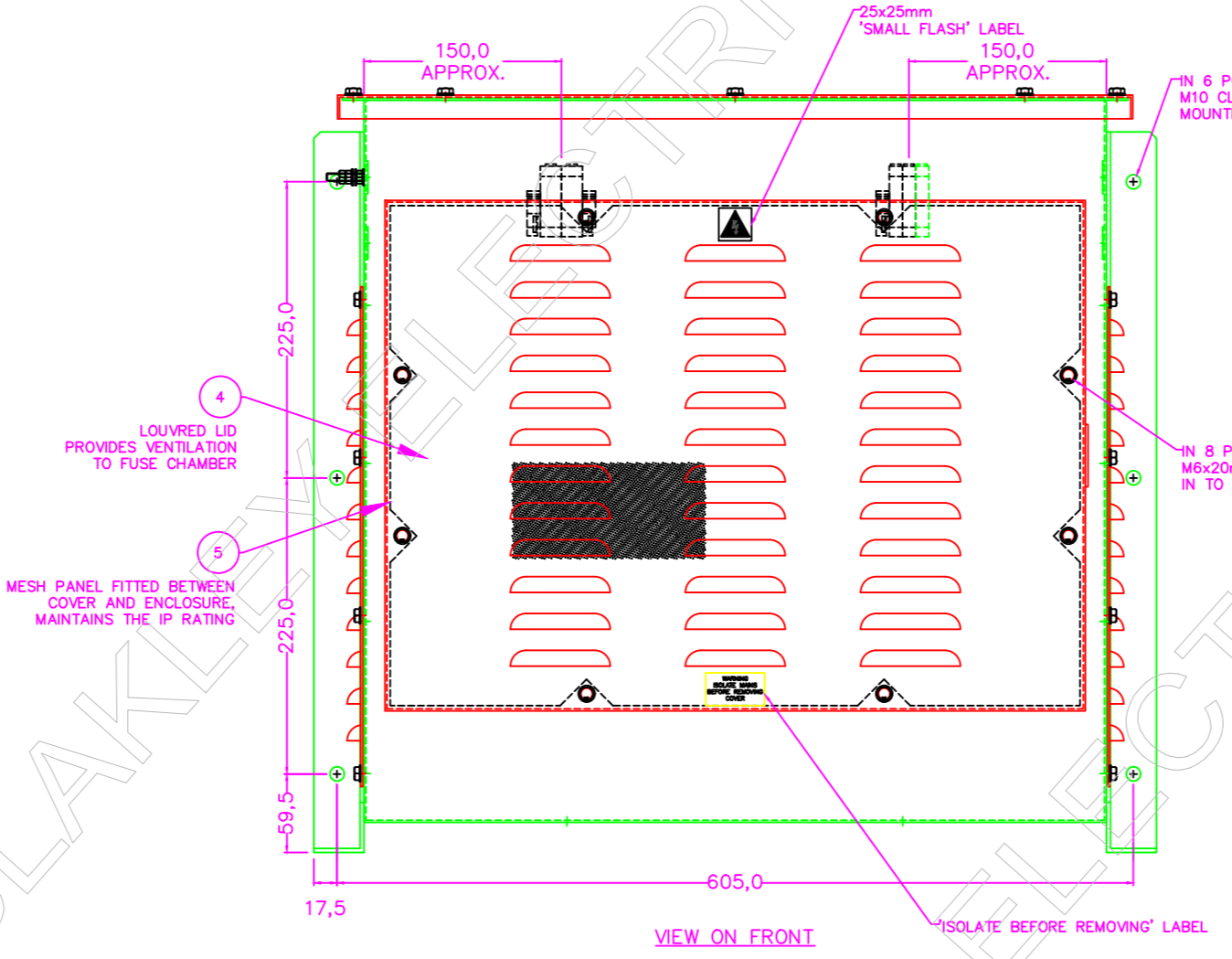
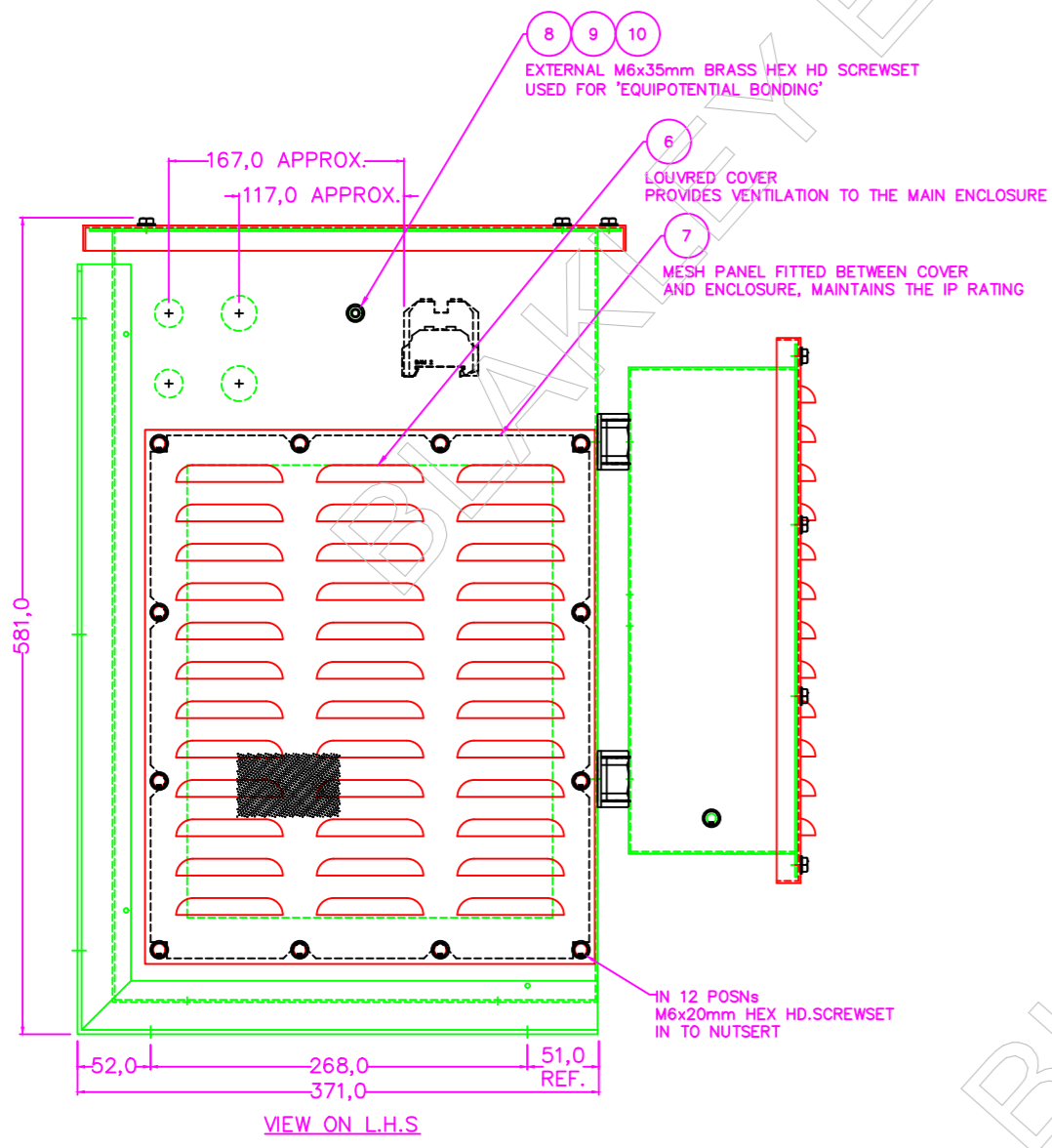
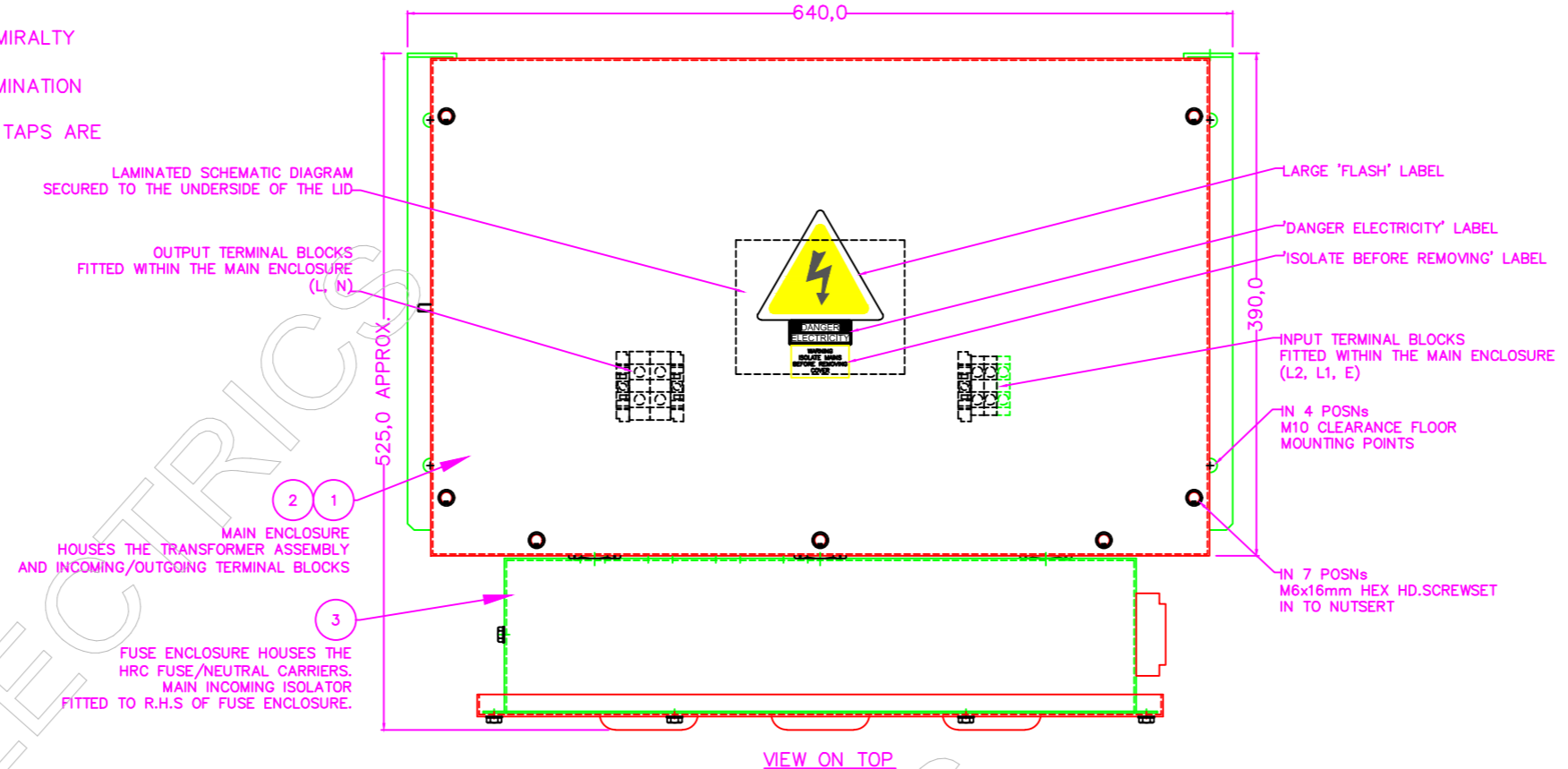


- NOTES:**
- DESIGN GENERALLY IN ACCORDANCE WITH SELLAFIELD LTD ENGINEERING SPECIFICATION ES_1_2223_2 AND BS EN IEC 61558 PARTS 1 & 2-4.
 - AMBIENT TEMPERATURE OPERATING RANGE -5°C TO +35°C.
 - FABRICATED FROM MILD STEEL, FINISHED WITH A ZINC PHOSPHATE PRE-TREATMENT AND ELECTROSTATICALLY APPLIED POLYESTER POWDER COATING, SHADE BS4800 18B25 (DARK ADMIRALTY GREY).
 - CABLE ACCEPTANCE FOR INCOMING & OUTGOING TERMINALS, 10mm² MAX. APPROXIMATE TERMINATION DISTANCES ARE SHOWN HEREIN.
 - THE TRANSFORMER HAS SEVERAL PRIMARY TAPPINGS; 20, 0, 375, 415 & 455V (0V & 415V TAPS ARE CONNECTED BY DEFAULT).
 - OVERALL ASSEMBLY IP: IP31.
 - OVERALL APPROXIMATE WEIGHT OF ASSEMBLY: 128kg.
 - REFER TO SHEET 2 FOR MORE DETAILS/INFORMATION.

ITEM No.	PART NUMBER	DESCRIPTION	QTY
1	S050670	ENCLOSURE FOR 10kVA 1PH TRANS. B36733 FINE B/D06	1
2	S120338	ENCLOSURE LID FOR 10kVA 1PH TRANS. C36799 FINE B/D06	1
3	S200931	FUSE ENCLOSURE FOR 10kVA 1PH TRANS. C36794 FINE B/D06	1
4	S120341	FUSE ENCL. LID FOR 10kVA 1PH TRANS. C36796 FINE B/D06	1
5	S120284	LOUVRE MESH FOR 10kVA FUSE ENC. C18640 NO FIN	1
6	S120339	LOUVRE PLATE FOR 10kVA 1PH TRANS. C36784 FINE B/D06	2
7	S120340	LOUVRE MESH FOR 10kVA 1PH TRANS. E36765 NO FIN	1
8	S200275	SCREW HEX HD BRASS M6 X 35 SELF COLOUR	1
9	S150023	NUT HEX HD FULL BRASS M6 SELF COLOUR	3
10	S200058	WASHER FLAT BRASS M6 5/16 FORM A	4
11	S200172	SWITCH ROTARY 32A DP KG32B7202/GB4018E	1
12	S225100	TRANS 10kVA 415/110V CT MT CU SSES	1
13	S210422	TRANSFORMER FIXING STRAP 22MM CTS C36798 NO FIN	2
14	S060622	FUSEHOLDER & BASE RS100H-W 100A WHITE	2
15	S150001	NEUTRAL LINK FOR RS100H-W P110154-10	2
16	S060027	FUSEHOLDER & BASE RS100H 100A	1
17	S060028	FUSE 100A HRC LAWSON TOP100	1



CUSTOMER INFORMATION COPY

THIS DRAWING IS THE PROPERTY AND COPYRIGHT OF BLAKLEY ELECTRICS AND MUST NOT, WITHOUT THEIR WRITTEN CONSENT, BE PASSED ON, COPIED, OR USED FOR ANY OTHER PURPOSE. THIS COPY IS UNCONTROLLED UNLESS OTHERWISE MARKED.

REV: -	EDR: -	UNLESS OTHERWISE STATED:- ALL DIMENSIONS IN MM. EWM REFERS TO ENGINEERING & WORKSHOP MANUAL TOLERANCES TO EWM SECTION 3.1.3 FIXING STD TO EWM APPENDIX D. WIRING STD EWM SECTION 4. WELDING STANDARD TO QAI 061.		MATERIAL	BASED ON
DO NOT SCALE THIS DRAWING. IF IN DOUBT, ASK		REF. S210418	COPY ISSUED 12 Sep 2022	ORIGINAL SCALE 1:5	DATE 27.05.22
TITLE GENERAL ASSEMBLY FOR TH/1/10/415-110NE SELLAFIELD		DRN. B.W.	DRAWING No. B36736	CHKD.	REVISION
		APPD. BWA	SHEET 1 OF 2		