

1 2 3 4 5 6 7 8 9 10 11 12

A

B

C

D

E

F

G

H

A

B

C

D

E

F

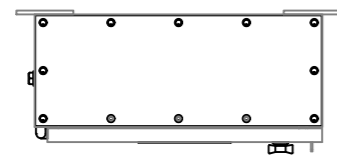
G

H

A2

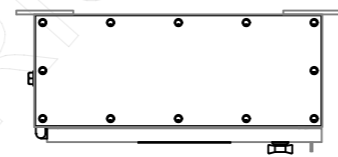
DB266-3

S040276P - DB266-3/1200-4P/MGPA4/P
200A 4P ISOLATOR & 4 WAY PAN ASSEMBLY
S040282P - DB266-3/1200-4P/MGPA4/DR/P
200A 4P ISOLATOR, 4 WAY PAN ASSEMBLY & DIN RAIL FOR UP TO 2 OFF 4P DEVICES
S040277P - DB266-3/1200-4P/MGPA6/P
200A 4P ISOLATOR & 6 WAY PAN ASSEMBLY



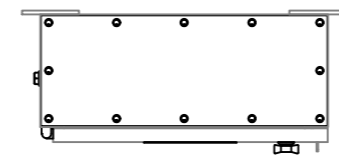
DB266-4

S040278P - DB266-4/1200-4P/MGPA8/P
200A 4P ISOLATOR & 8 WAY PAN ASSEMBLY
S040283P - DB266-4/1200-4P/MGPA8/DR/P
200A 4P ISOLATOR, 8 WAY PAN ASSEMBLY & DIN RAIL FOR UP TO 4 OFF 3P DEVICES
S040279P - DB266-4/1200-4P/MGPA12/P
200A 4P ISOLATOR & 12 WAY PAN ASSEMBLY



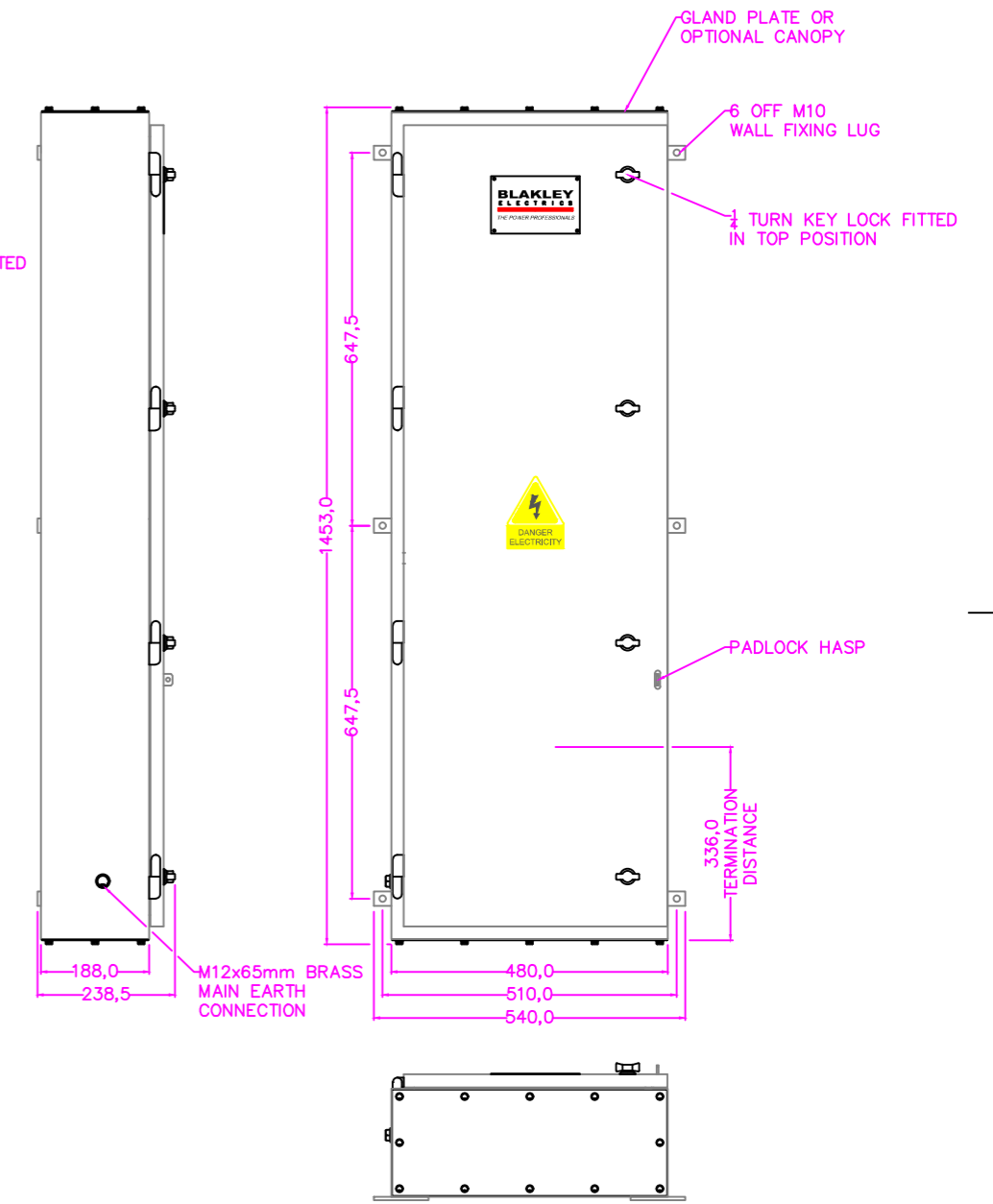
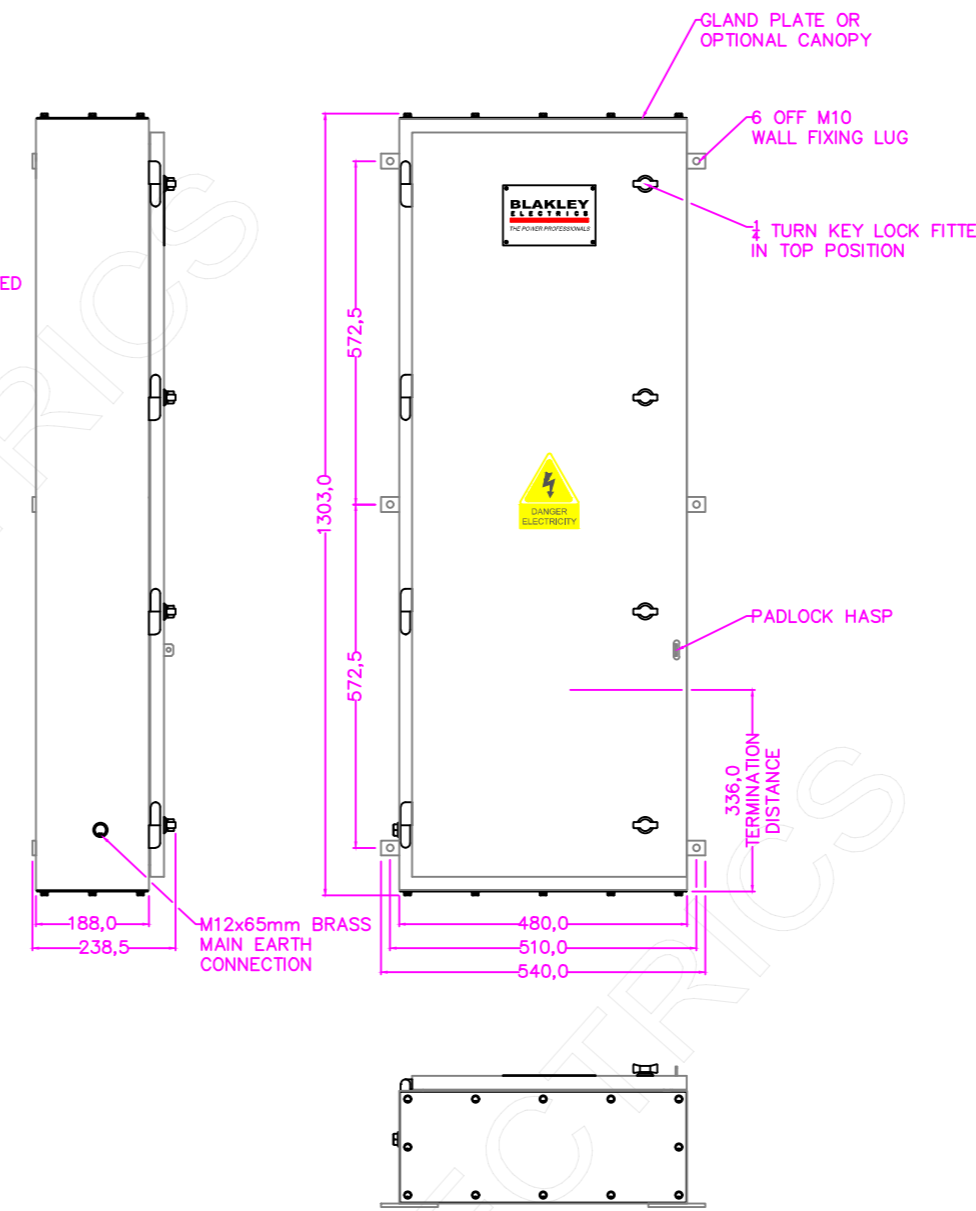
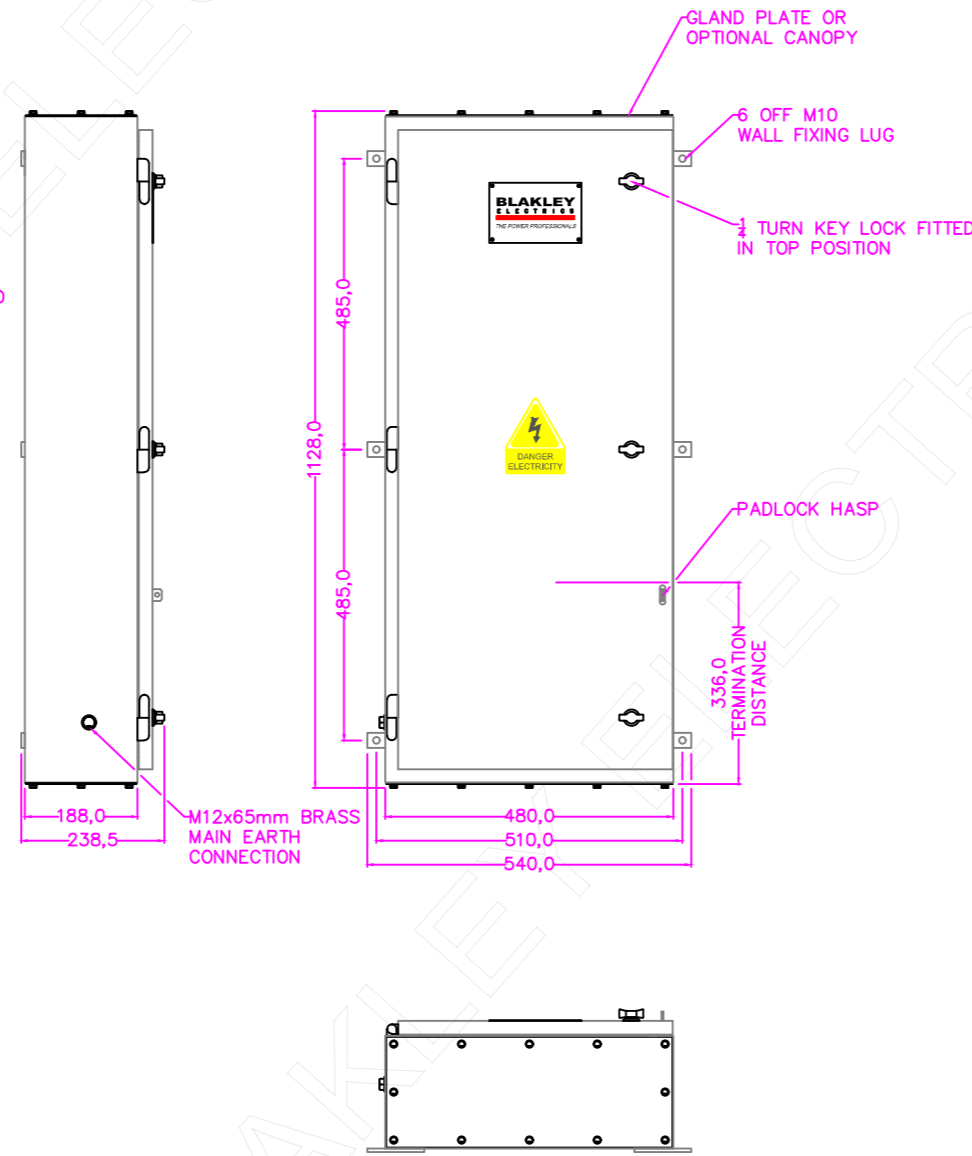
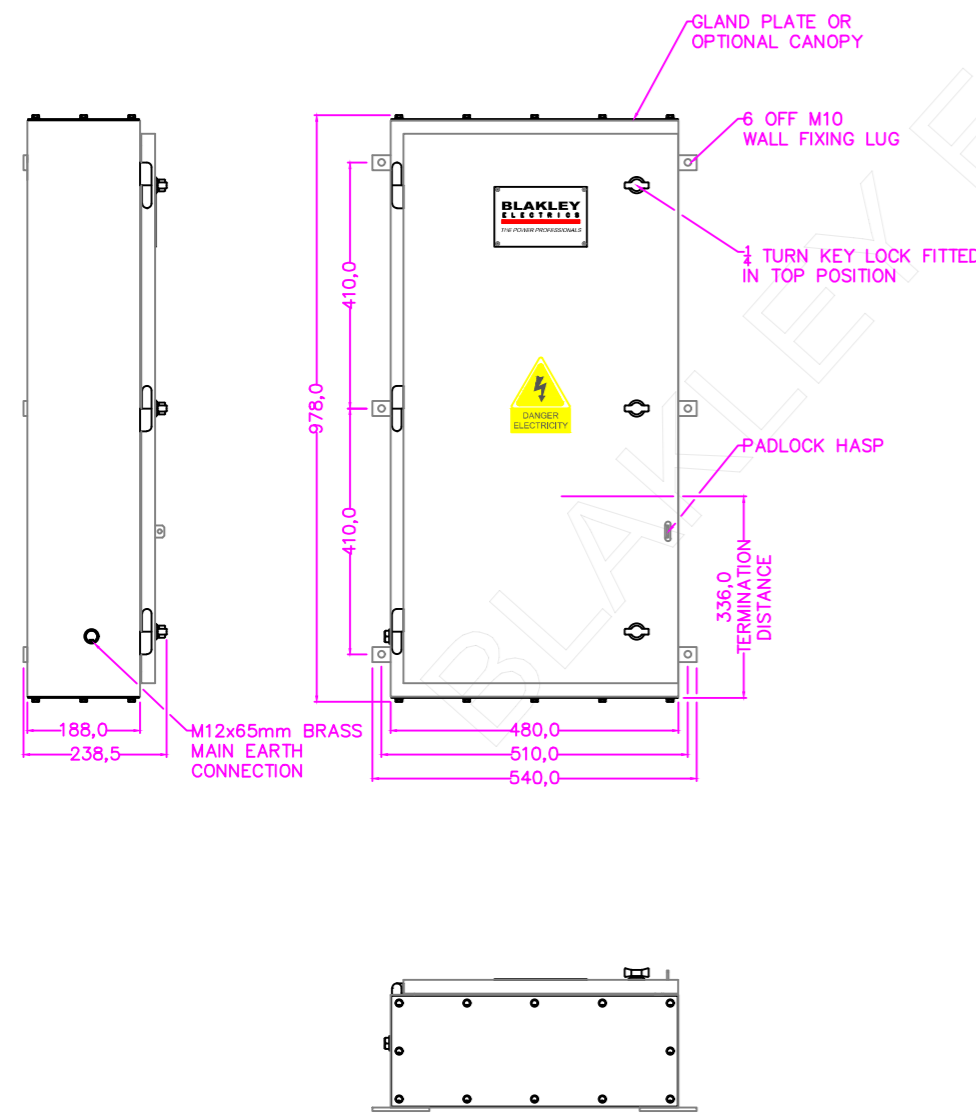
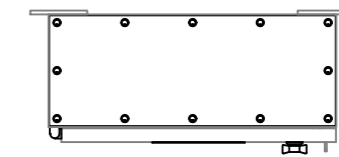
DB266-5

S040284P - DB266-5/1200-4P/MGPA12/DR/P
200A 4P ISOLATOR, 12 WAY PAN ASSEMBLY & DIN RAIL FOR UP TO 6 OFF 3P DEVICES
S040280P - DB266-5/1200-4P/MGPA16/P
200A 4P ISOLATOR & 16 WAY PAN ASSEMBLY
S040281P - DB266-5/1200-4P/MGPA18/P
200A 4P ISOLATOR & 18 WAY PAN ASSEMBLY



DB266-6

S040463P - DB266-6/1200-4P/MGPA16/DR/P
200A 4P ISOLATOR, 16 WAY PAN ASSEMBLY & DIN RAIL FOR UP TO 8 OFF 3P DEVICES
S040460P - DB266-6/1200-4P/MGPA24/P
200A 4P ISOLATOR & 24 WAY PAN ASSEMBLY



CUSTOMER INFORMATION COPY

NOTES:

1. ALL ENCLOSURES USE WALL MOUNTING LUGS WITH Ø11.1mm FIXING HOLES.
2. ALL ENCLOSURES HAVE A HINGED COVER FITTED WITH 1/2 TURN KEY LOCK, 1/2 TURN LOCK & PADLOCK HASP.
3. ENCLOSURES CAN BE EQUIPPED WITH TOP & BOTTOM GLAND PLATES OR A TOP CANOPY.
4. ALL OPTIONS COME WITH A INSET PLATE PROVIDING PROTECTION TO IP2X WHEN DOOR HAS BEEN OPENED.
5. PAINT FINISH: DARK ADMIRALTY GREY BS4800 18B25
6. TERMINATION DISTANCE: 336mm (RECOMMENDED DISTANCE FOR UP TO 185mm CABLE)
7. INGRESS PROTECTION: IP66

THIS DRAWING IS THE PROPERTY AND COPYRIGHT OF BLAKLEY ELECTRICS AND MUST NOT, WITHOUT THEIR WRITTEN CONSENT, BE PASSED ON, COPIED, OR USED FOR ANY OTHER PURPOSE. THIS COPY IS UNCONTROLLED UNLESS OTHERWISE MARKED.

REV: A	EDR: 8497	UNLESS OTHERWISE STATED:- ALL DIMENSIONS IN MM. EWM REFERS TO ENGINEERING & WORKSHOP MANUAL TOLERANCES TO EWM SECTION 3.1.3 FIXING STD TO EWM APPENDIX D. WIRING STD EWM SECTION 4. WELDING STANDARD TO QAI 061.		MATERIAL: MILD STEEL	BASED ON:
DO NOT SCALE THIS DRAWING. IF IN DOUBT, ASK		REF: DB266-*	COPY ISSUED: 31 May 2023	ORIGINAL SCALE: 1:12	
TITLE: DISTRIBUTION BOARDS DB266-3, DB266-4, DB266-5 & DB266-6		DATE: 31/05/23	DRN: P.R.	DRAWING No. B37473	
		CHKD:	APPD: [Signature]	REVISION: A	