

1 2 3 4 5 6 7 8 9 10 11 12

A

B

C

D

E

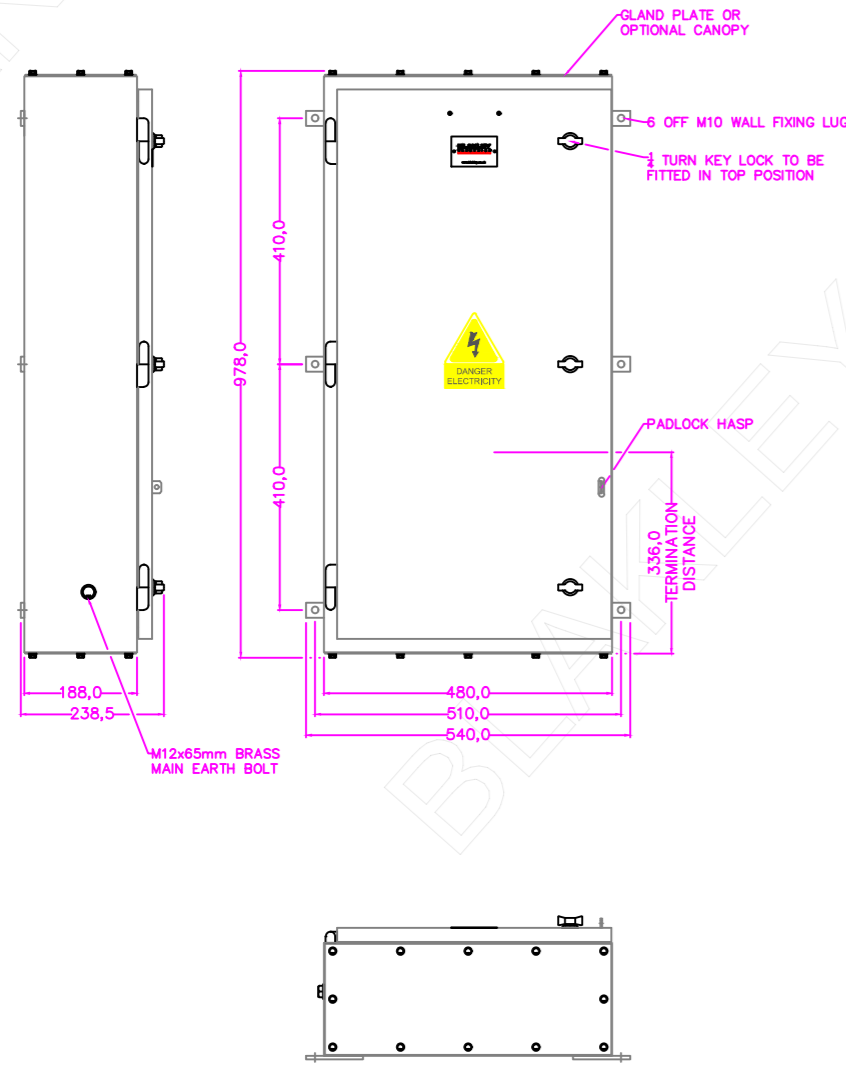
F

G

H

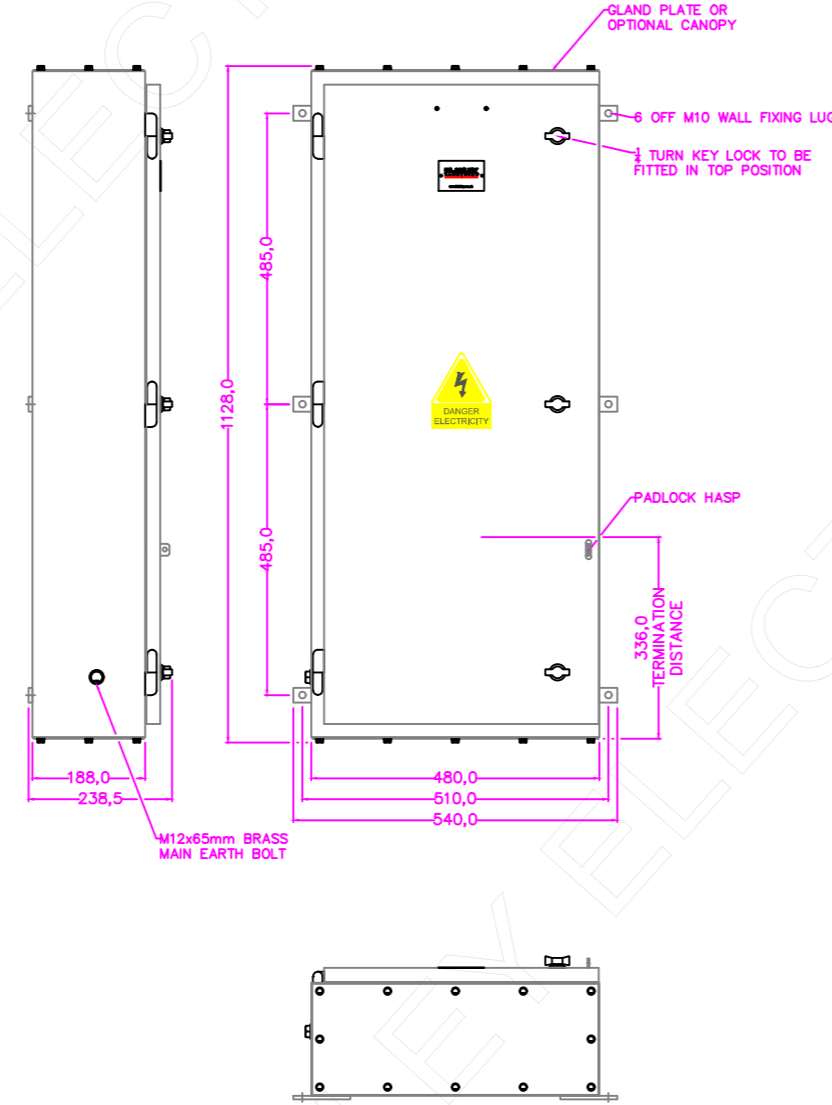
DB266-3

S040497P - DB266-3/1200-4P/MGPA4/P/LUL
200A 4P ISOLATOR & 4 WAY PAN ASSEMBLY
S040498P - DB266-3/1200-4P/MGPA6/P/LUL
200A 4P ISOLATOR & 6 WAY PAN ASSEMBLY



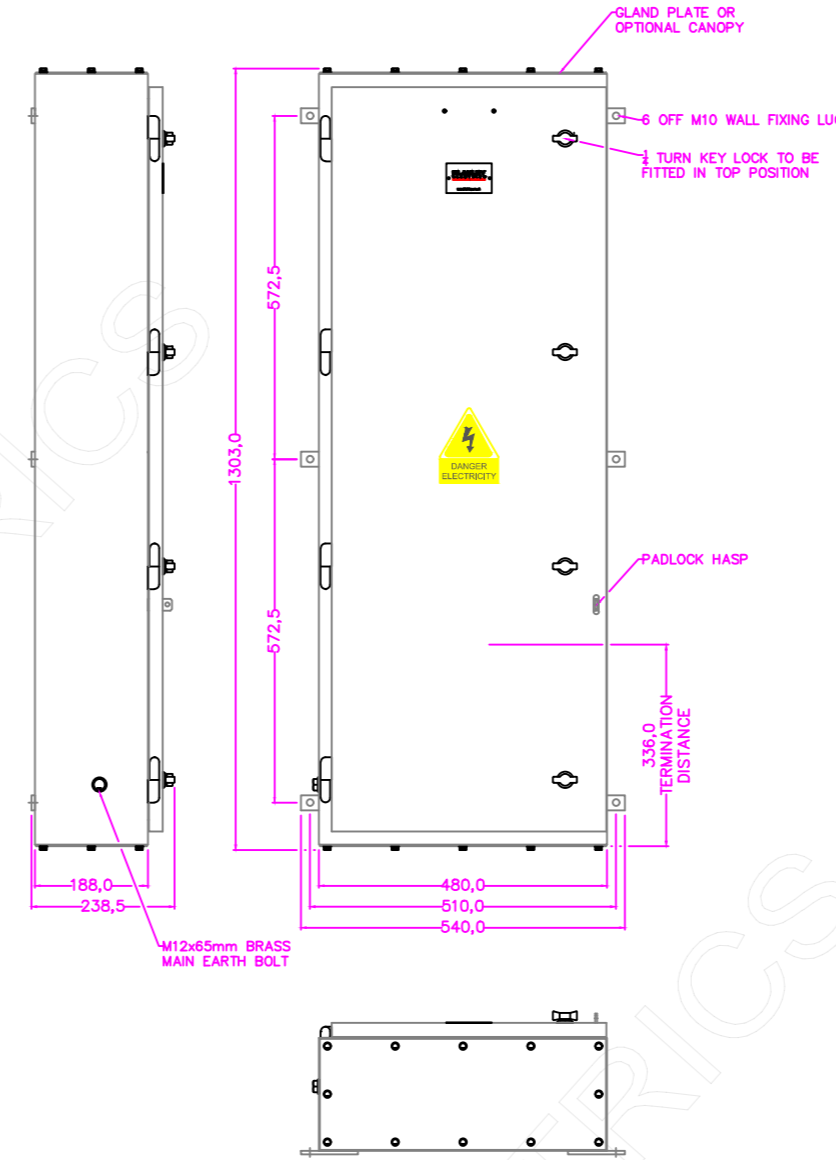
DB266-4

S040499P - DB266-4/1200-4P/MGPA8/P/LUL
200A 4P ISOLATOR & 8 WAY PAN ASSEMBLY
S040500P - DB266-4/1200-4P/MGPA12/P/LUL
200A 4P ISOLATOR & 12 WAY PAN ASSEMBLY



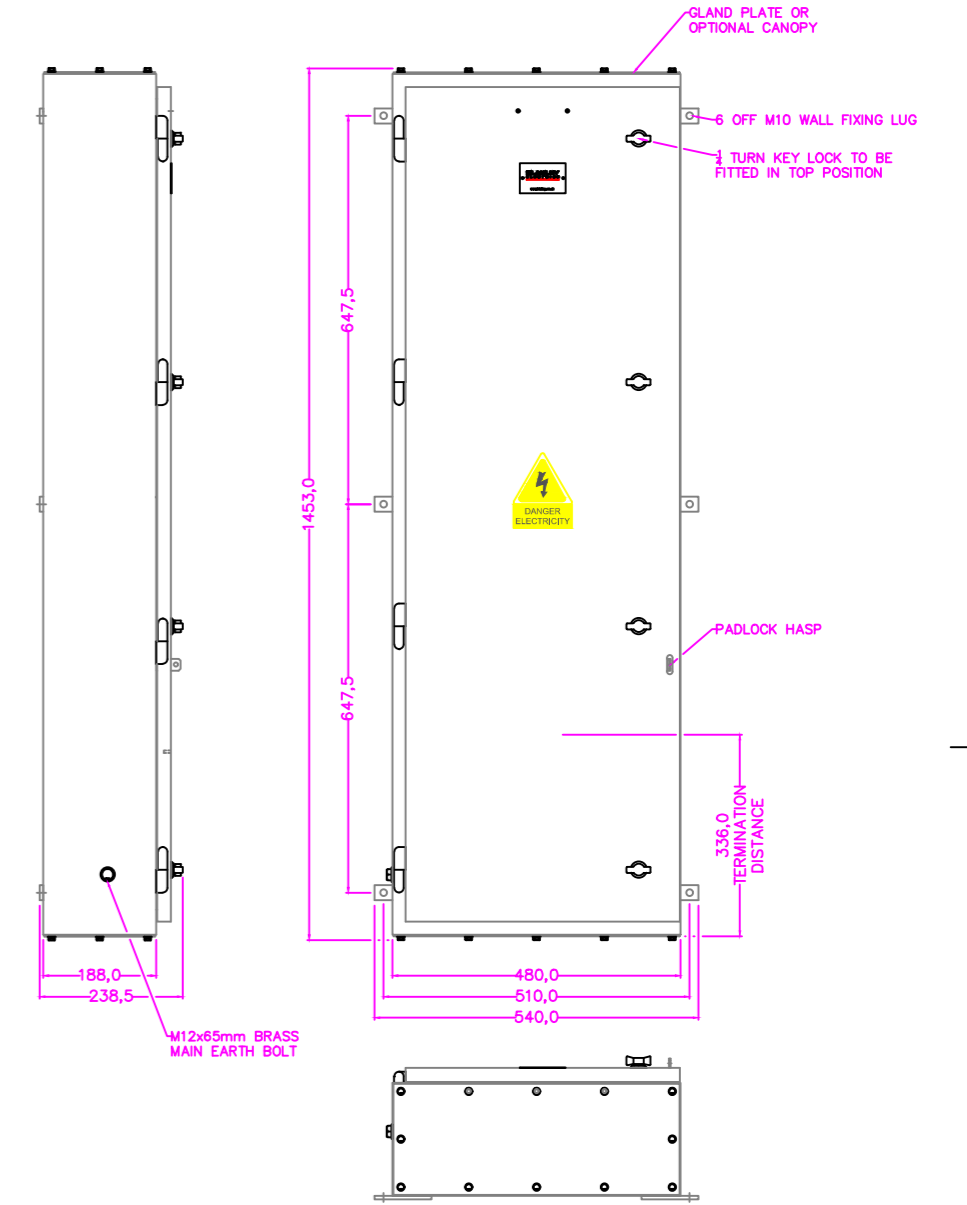
DB266-5

S040501P - DB266-5/1200-4P/MGPA16/P/LUL
200A 4P ISOLATOR & 16 WAY PAN ASSEMBLY
S040502P - DB266-5/1200-4P/MGPA18/P/LUL
200A 4P ISOLATOR & 18 WAY PAN ASSEMBLY



DB266-6

S040503P - DB266-6/1200-4P/MGPA24/P/LUL
200A ISOLATOR & 24 WAY PAN ASSEMBLY



CUSTOMER INFORMATION COPY

- NOTES:**
1. ALL ENCLOSURES USE WALL MOUNTING LUGS WITH Ø11.1mm FIXING HOLES.
 2. ALL ENCLOSURES HAVE A HINGED COVER FITTED WITH ½ TURN KEY LOCK & PADLOCK HASP.
 3. ENCLOSURES CAN BE EQUIPPED WITH TOP & BOTTOM GLAND PLATES OR A TOP CANOPY.
 4. ALL OPTIONS COME WITH A INSET PLATE PROVIDING PROTECTION TO IP2X WHEN DOOR HAS BEEN OPENED.
 5. PAINT FINISH: LUL APR APPROVED LIGHT ADMIRALTY GREY BS381C SHADE 697
 6. TERMINATION DISTANCE: 336mm (RECOMMENDED DISTANCE FOR UP TO 185mm CABLE)
 7. CABLING: LSOH BS7211
 8. INGRESS PROTECTION: IP66

THIS DRAWING IS THE PROPERTY AND COPYRIGHT OF BLAKLEY ELECTRICS AND MUST NOT, WITHOUT THEIR WRITTEN CONSENT, BE PASSED ON, COPIED, OR USED FOR ANY OTHER PURPOSE. THIS COPY IS UNCONTROLLED UNLESS OTHERWISE MARKED.

REV: -	EDR: -	MATERIAL	BASED ON
UNLESS OTHERWISE STATED:- ALL DIMENSIONS IN MM. EWM REFERS TO ENGINEERING & WORKSHOP MANUAL TOLERANCES TO EWM SECTION 3.1.3 FIXING STD TO EWM APPENDIX D. WIRING STD EWM SECTION 4. WELDING STANDARD TO QAI 061.		MILD STEEL	
DO NOT SCALE THIS DRAWING. IF IN DOUBT, ASK		REF. STANDARD	COPY ISSUED 13 Jul 2023
TITLE		ORIGINAL SCALE 1:12	BLAKLEY ELECTRICS
DISTRIBUTION BOARDS		DATE 01/06/23	DRAWING No. B37807
DB266-3, DB266-4, DB266-5 & DB266-6		DRN. P.R.	REVISION
		CHKD.	
		APPD. <i>abj</i>	

1 2 3 4 5 6 7 8 9 10 11 12

A

B

C

D

E

F

G

H

A2