

SOCKETS AND GLANDS MOUNTED TO THE SIDES TO MINIMISE DEPTH

REMOVABLE LID

230:110V RLV 5kVA SINGLE PHASE TRANSFORMER

CIRCUIT PROTECTIVE DEVICES LOCATED UNDER A STEEL DOLLY COVER

25A TYPE 'D' DP MCB INCOMING PROTECTION

1 OFF 32A DP TYPE 'C' MCB FEEDING 1 OFF 32A 110V SOCKET
 1 OFF 16A DP TYPE 'C' MCB FEEDING PAIR OFF 16A 110V SOCKETS
 2 OFF 10A DP TYPE 'C' MCB FEEDING 2 OFF 25A 30mA RCCBs FEEDING 2 OFF LIGHTING GLANDS

12.0mm HEAVY DUTY LIFTING HANDLES

SPACE FOR UP TO 4 OUTPUTS ON EACH SIDE SUITABLE FOR A COMBINATION OF;
 32A SOCKETS
 16A SOCKETS
 OR LIGHTING GLANDS

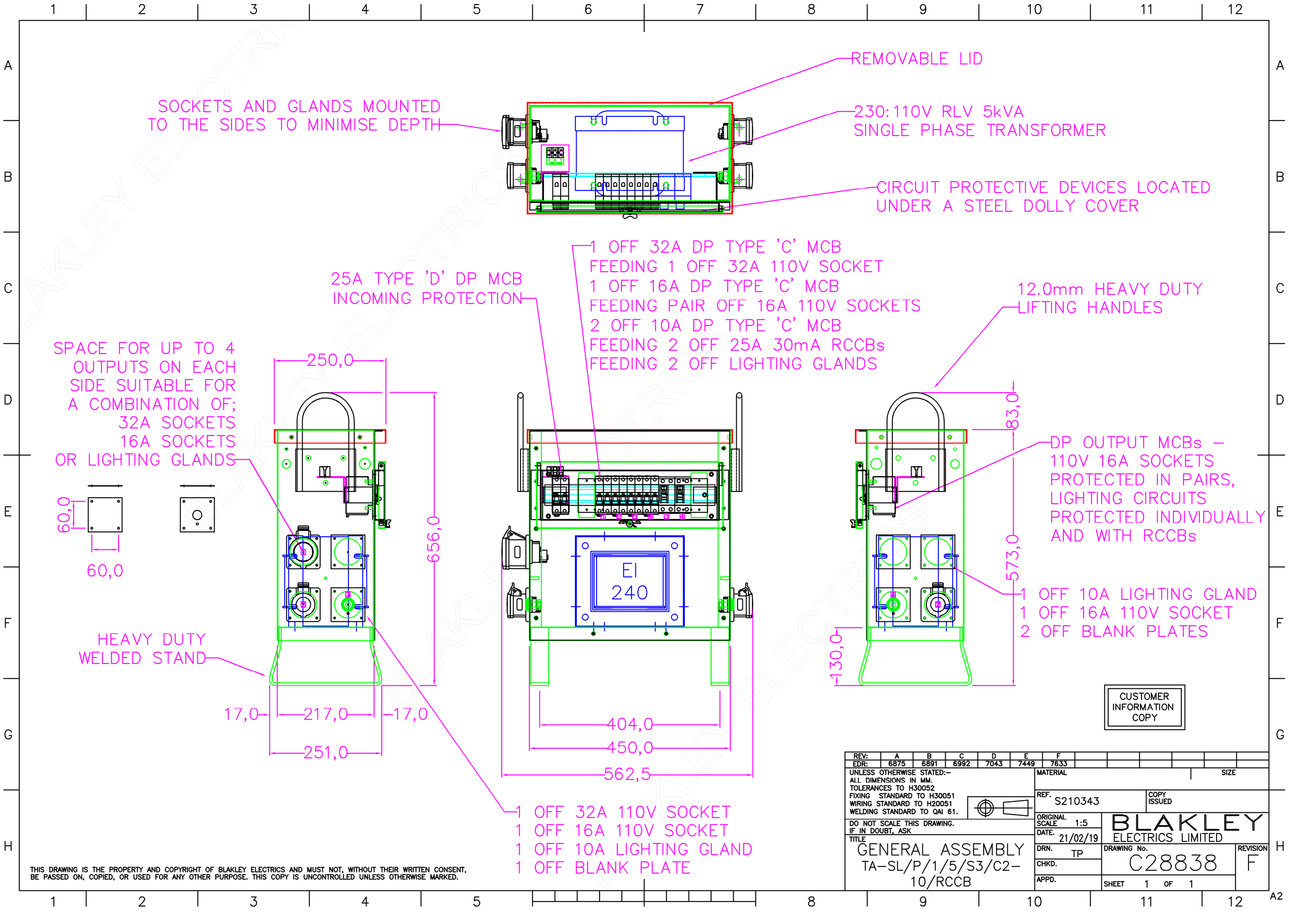
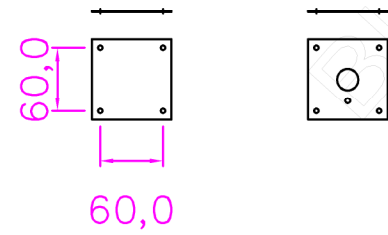
DP OUTPUT MCBs - 110V 16A SOCKETS PROTECTED IN PAIRS, LIGHTING CIRCUITS PROTECTED INDIVIDUALLY AND WITH RCCBs

1 OFF 10A LIGHTING GLAND
 1 OFF 16A 110V SOCKET
 2 OFF BLANK PLATES

HEAVY DUTY WELDED STAND

CUSTOMER INFORMATION COPY

1 OFF 32A 110V SOCKET
 1 OFF 16A 110V SOCKET
 1 OFF 10A LIGHTING GLAND
 1 OFF BLANK PLATE



THIS DRAWING IS THE PROPERTY AND COPYRIGHT OF BLAKLEY ELECTRICS AND MUST NOT, WITHOUT THEIR WRITTEN CONSENT, BE PASSED ON, COPIED, OR USED FOR ANY OTHER PURPOSE. THIS COPY IS UNCONTROLLED UNLESS OTHERWISE MARKED.

REV:	A	B	C	D	E	F					
EDR:	6875	6891	6992	7043	7449	7633					
UNLESS OTHERWISE STATED:- ALL DIMENSIONS IN MM. TOLERANCES TO H30052 FIXING STANDARD TO H30051 WIRING STANDARD TO H20051 WELDING STANDARD TO QAI 61.							MATERIAL				SIZE
DO NOT SCALE THIS DRAWING. IF IN DOUBT, ASK							REF. S210343		COPY ISSUED		
TITLE GENERAL ASSEMBLY TA-SL/P/1/5/S3/C2- 10/RCCB							ORIGINAL SCALE 1:5		DATE 21/02/19		 BLAKLEY ELECTRICS LIMITED DRAWING No. C28838 REVISION F
							DRN. TP		CHKD.		
							APPD.		SHEET 1 OF 1		