

1 2 3 4 5 6 7 8

A

B

C

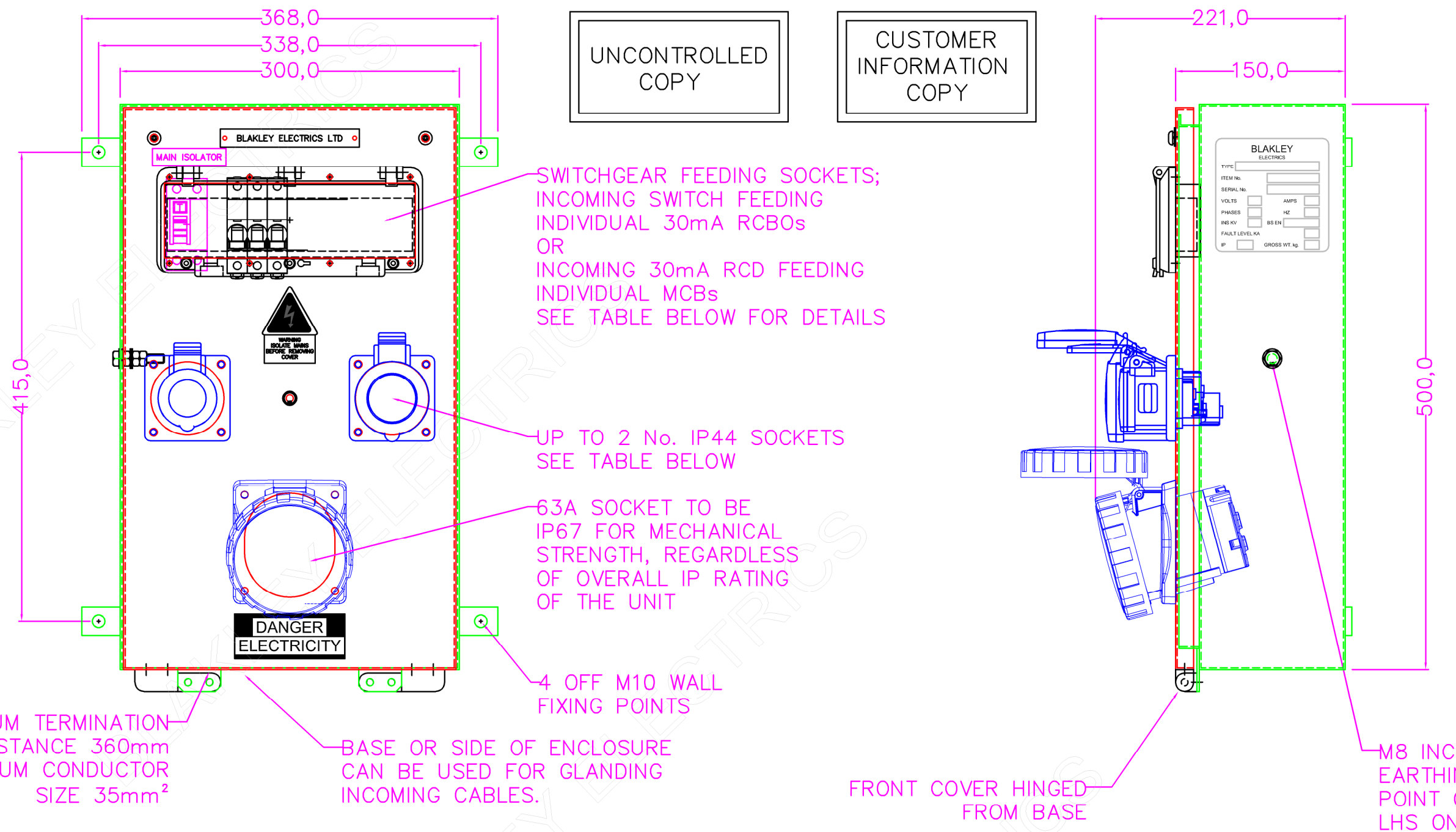
D

E

F

UNCONTROLLED COPY

CUSTOMER INFORMATION COPY



PCB - POWER CLUSTER - SOCKET LAYOUT 2								
PART No.	TYPE REFERENCE	INCOMER	230V-16A	230V-32A	230V-63A	400V-16A	400V-32A	400V-63A
PCB - POWER CLUSTER, SOCKET LAYOUT 2; INCOMING RCBO / OUTGOING MCBs								
S171006	PCB/1/RCCB-63/0006/IP44	RCCB 63A 30mA DP	1	1	1			
S171010	PCB/3/RCCB-63/0010/IP44	RCCB 63A 30mA 4P					1	1
PCB - POWER CLUSTER, SOCKET LAYOUT 2; INCOMING SWITCH / OUTGOING RCBOs								
S171033	PCB/1/63/0033/IP44	SWITCH 63A DP	1	1	1			

REV: -									
EDR: -									
UNLESS OTHERWISE STATED:- ALL DIMENSIONS IN MM. TOLERANCES TO H30052 FIXING STANDARD TO H30051 WIRING STANDARD TO H20051 WELDING STANDARD TO QAI 61.						MATERIAL		SIZE	
DO NOT SCALE THIS DRAWING. IF IN DOUBT, ASK						REF. SEE TABLE		COPY ISSUED	
TITLE GENERAL ASSEMBLY PCB SOCKET LAYOUT 2 IP44 SOCKETS						ORIGINAL SCALE 1:4		 BLAKLEY ELECTRICS LIMITED	
						DATE 19/10/17			
						DRN. TP		DRAWING No. C31075	
						CHKD.		SHEET 1 OF 2	
						APPD.			

THIS DRAWING IS THE PROPERTY AND COPYRIGHT OF BLAKLEY ELECTRICS AND MUST NOT WITHOUT THEIR WRITTEN CONSENT BE PASSED ON, COPIED, OR USED FOR ANY OTHER PURPOSE. THIS COPY IS UNCONTROLLED UNLESS OTHERWISE MARKED.

1 2 3 4 5 6 7 8 A3