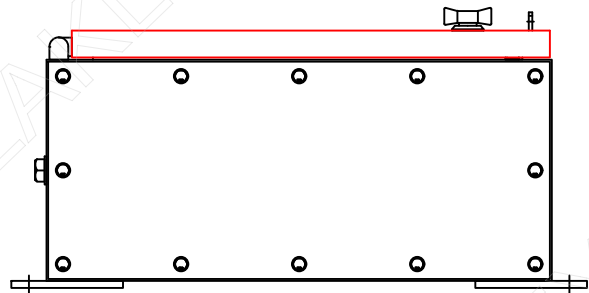
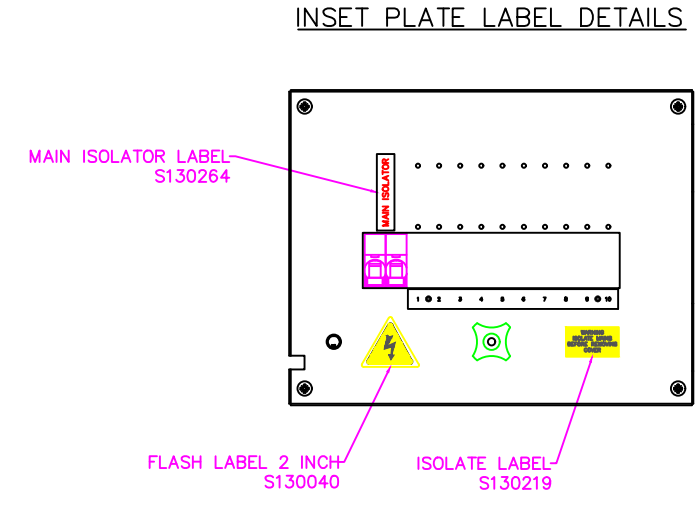
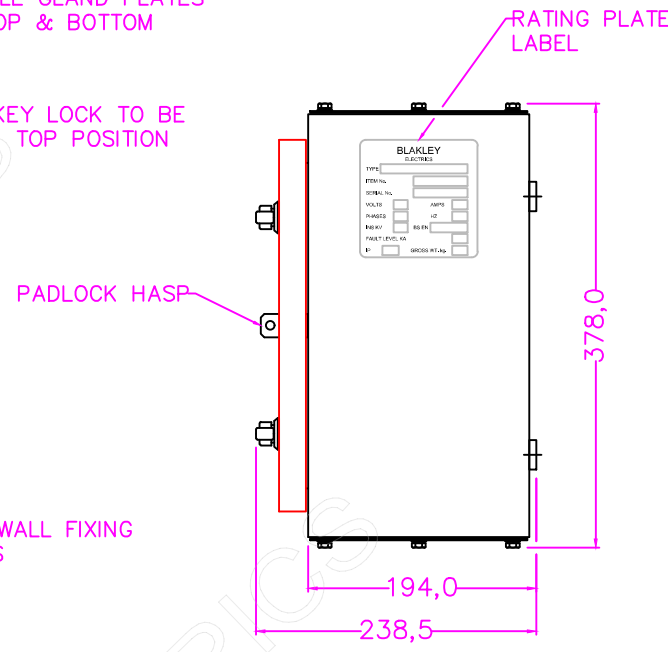
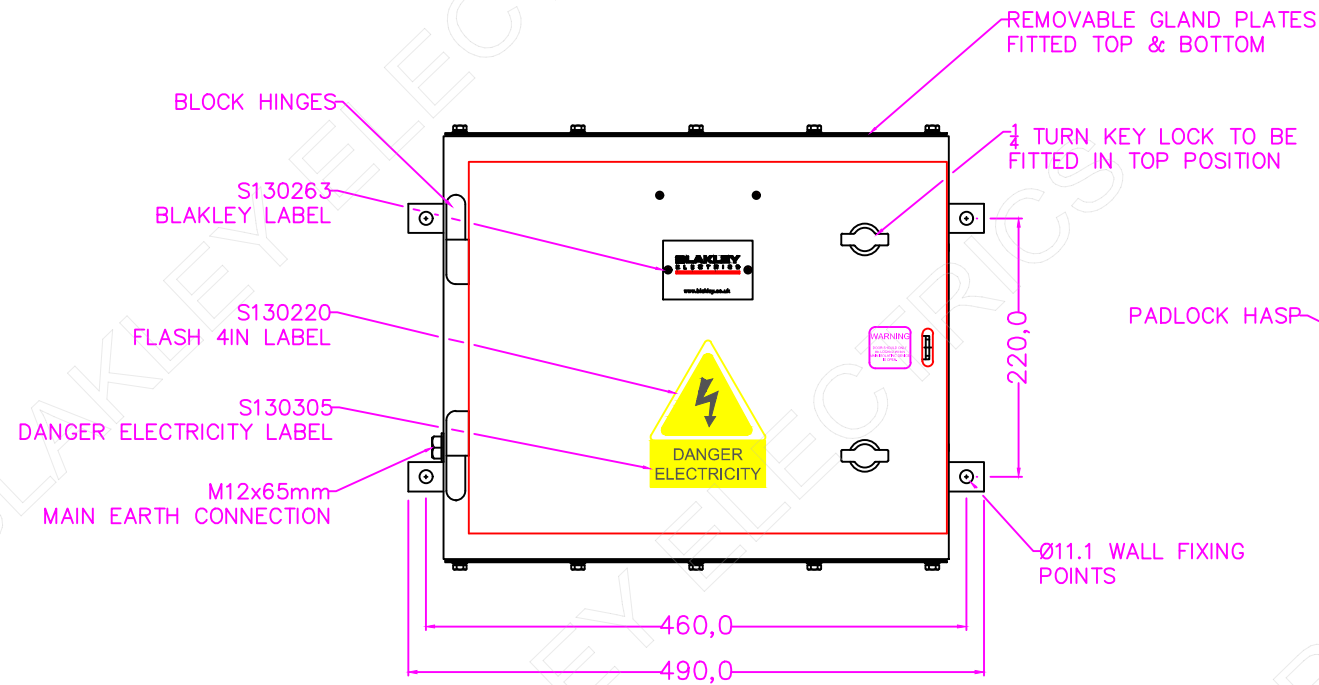


**SINGLE PHASE DISTRIBUTION BOARD**  
10 WAY SP PAN ASSEMBLY



**CUSTOMER INFORMATION COPY**

- NOTES:**
- INGRESS PROTECTION: IP66
  - PAINT FINISH: LUL APR APPROVED LIGHT ADMIRALTY GREY BS381C SHADE 697
  - CABLE ENTRY: TOP & BOTTOM REMOVABLE GLAND PLATES
  - MAXIMUM CABLE ACCEPTANCE: 50mm RIGID, 35mm FLEXIBLE
  - CABLING: LSOH BS7211

THIS DRAWING IS THE PROPERTY AND COPYRIGHT OF BLAKLEY ELECTRICS AND MUST NOT WITHOUT THEIR WRITTEN CONSENT BE PASSED ON, COPIED, OR USED FOR ANY OTHER PURPOSE. THIS COPY IS UNCONTROLLED UNLESS OTHERWISE MARKED.

REV:	-										
EDR:	-										
UNLESS OTHERWISE STATED:- ALL DIMENSIONS IN MM. EWM REFERS TO ENGINEERING & WORKSHOP MANUAL TOLERANCES TO EWM SECTION 3.1.3 FIXING STD TO EWM APPENDIX D. WIRING STD EWM SECTION 4. WELDING STANDARD TO QAI 061.						MATERIAL MILD STEEL		BASED ON			
DO NOT SCALE THIS DRAWING. IF IN DOUBT, ASK						REF. S040511P	COPY ISSUED		22 Jun 2023		
TITLE GENERAL ASSEMBLY DB166/I125-2P/ MGPA10/P/LUL						ORIGINAL SCALE 1:6					
						DATE 27/04/23			DRAWING No.		REVISION
						DRN. P.R.	C37776				
						CHKD.					
						APPD.					