

Ground Mounted Assemblies

Blakley Ground Mounted Distribution Assemblies are designed for flush floor mounting in locations as diverse as Pedestrian Precincts and Aircraft Hangars. Typical applications range from supplying power for light and heat in street markets, to aircraft manufacture and maintenance.

Destruction Tests have been carried out on a range of ground mounted enclosures and we have third party test certificates for enclosures meeting the requirements of FACTA Class B, Class D and Class F. Copies of the Destruction Test Reports are available on our website. We have developed a range of ground boxes for installation in pedestrian precincts, forecourts, commercial delivery / parking areas, airfield aprons and aircraft hangars, with designs extrapolated from the type tested products. If an enclosure design is required to have been specifically type tested, this must be stated at the time of enquiry.

We offer three styles of Ground Mounted Assembly as detailed below. In all of the standard arrangements the lids can be closed when plugs are inserted into sockets, thus avoiding a trip hazard.

GMDA series

Sockets are fitted to underside of the chequer plate lid and are easily accessible when the lid is raised.

- Standard duty (FACTA Class B) and heavy duty (FACTA Class F) are available.
- Hot dip galvanized finish for continuous outdoor operation.
- Lockable lid hinged for safe and easy one person operation.

GIFA series

With infilled lid, hinged (GIFA/HL) or lift out (GIFA/LL)

- Standard duty (FACTA Class B) with facility to incorporate bricks and blocks in the lid to match the surround.
- Choice of hinged lid and lift-out lid. The in-fill must be permanently fixed when lids are hinged. Reinforcing rods are incorporated to provide a secure anchor for the mortar.
- Hot dip galvanized finish for continuous outdoor operation.
- Lockable lids. Hinged lid version incorporates a gas strut and is suitable for one person operation.

IGA series

Sockets are fixed in the ground.

- Standard duty (FACTA Class B) and heavy duty (FACTA Class F) with chequer plate lids.
- Hot dip galvanized finish for continuous outdoor operation.
- Lift out, lockable lid.

Please see over the page for the standard IP65 distribution modules designed to be incorporated into the different ground boxes. Non-standard distribution modules can also be supplied.



GMDA complete with twin sockets



GIFA/HL with hinged infilled lid



IGA with lift out lid removed c/w twin sockets

All Blakley Ground Boxes are of substantial construction and are designed for use where large commercial vehicles are in use. The following table is an extract from the FACTA guide to ratings:

	GLW	Wheel Loads		Load Test Data		Typical Applications	
FACTA Class	Gross Laden Vehicle Weight (slow moving) #	Slow moving pneumatic	Wheel load Slow moving solid	Load Acceptance Test	Strength Test	Pneumatic Tyres	Solid Tyres
B	Up to 44 tonnes (max axle weight of 11.5 tonnes)	5.0 tonnes (50kN)	0.75 tonne	63.25kN	101.0kN	Pedestrian precincts, forecourts, commercial delivery / parking areas	Factories and industrial plants where pick-up trucks and small pallet trucks operate
D		11.0 tonnes (108kN)	3.0 tonnes	137.5kN	220.0kN	Heavy duty plant areas, carriageways and industrial service roads where fast moving HGVs reach speeds of up to 20mph max.	Heavy duty industrial areas where medium duty fork lift trucks operate
F	Special Application Vehicles	24.0 tonnes	N/A	300kN	480kN	Civil and military airfield aprons, where particularly heavy wheel loads are imposed by aircraft and towing vehicles.	
# = Slow moving wheel loads are deemed to be speeds no greater than 20mph							

As can be seen, even our basic FACTA Class B boxes can withstand very heavy loads.

Ground Boxes and Distribution Modules are sold as separate items, allowing the boxes to be installed during the civils phase of a project and the distribution modules to be installed as part of the electrical installation. Distribution modules incorporate separate termination chambers, which can accept 1 x 16mm² 3C cable or 2 x 10mm² 3C cables, flexible or SWA. General arrangement drawings of standard boxes and distribution modules can be downloaded from our website. Part numbers for standard boxes and distribution modules are detailed below. Non-standard boxes and distribution modules can be made to order.

Part No.	Type No.	Description
2 Way GMDA (hinged lid) and GIFA/HL (in-filled hinged lid) Ground Boxes and GDA series Distribution Modules (order separately)		
S260037	GMDA/SD/2W	Enclosure and hinged lid, FACTA Class B, accepts 2 x 16A or 1 x 32A 3P socket
S260132	GMDA/HD/2W	Enclosure and hinged lid, FACTA Class F (heavy duty), accepts 2 x 16A or 1 x 32A 3P socket
S260194	GIFA/HL/SD/2W	Enclosure and in-filled hinged lid, FACTA Class B, accepts 2 x 16A or 1 x 32A 3P socket
S260110	GDA/OC/RCD/230/S1-16	1 x 16A MCB / 30 mA RCD combination feeding 1 x 16A 230V 3P IP67 socket
S260109	GDA/OC/RCD/230/S2-16	2 x 16A MCB / 30 mA RCD combinations feeding 2 x 16A 230V 3P IP67 sockets
S260119	GDA/OC/RCD/230/S1-32	1 x 32A MCB / 30 mA RCD combination feeding 1 x 32A 230V 3P IP67 socket
2 Way GIFA/LL (in-filled lift out lid) Ground Box and GFA series Distribution Modules (order separately)		
S260195	GIFA/LL/SD/2W	Enclosure and in-filled lift-out lid, FACTA Class B, accepts 2 x 16A or 1 x 32A 3P socket
S260200	GFA/OC/RCD/230/S1-16	1 x 16A MCB / 30 mA RCD combination feeding a 16A 230V 3P IP67 socket
S260201	GFA/OC/RCD/230/S2-16	2 x 16A MCB / 30 mA RCD combinations feeding 2 x 16A 230V 3P IP67 sockets
S260202	GFA/OC/RCD/230/S1-32	1 x 32A MCB / 30 mA RCD combination feeding 1 x 32A 230V 3P IP67 socket
2 Way IGA series Ground Box with lift-out lid and IA series Distribution Modules (order separately)		
S260196	IGA/SD/2W	Enclosure and lift-out lid, FACTA Class B, accepts 2 x 16A or 2 x 32A 3P socket or 1 x 16A and 1 x 32A
S260197	IA/OC/RCD/230/S2-16	2 x 16A MCB / 30 mA RCD combinations feeding 2 x 16A 230V 3P IP67 sockets
S260198	IA/OC/RCD/230/S2-32	2 x 32A MCB / 30 mA RCD combinations feeding 2 x 32A 230V 3P IP67 sockets
S260199	IA/OC/RCD/230/S2	2 x MCB / 30 mA RCD combinations feeding 1 x 32A and 1 x 16A 230V 3P IP67 sockets
4 Way GMDA (hinged lid) Ground Box and GDA series Distribution Modules (order separately)		
S260142	GMDA/SD/4W	Enclosure and hinged lid, FACTA Class B, accepts 4 x 16A or 4 x 32A 3P sockets, or a combination
S260190	GDA/OC/RCD/230/S4-16	4 x 16A MCB / 30 mA RCD combinations feeding 4 x 16A 230V 3P IP67 sockets
S260191	GDA/OC/RCD/230/S4	4 x MCB / 30 mA RCD combinations feeding 1 x 32A and 3 x 16A 230V 3P IP67 sockets
S260148	GDA/OC/RCD/230/S4-32	4 x 32A MCB / 30 mA RCD combinations feeding 4 x 32A 230V 3P IP67 sockets
Key for Ground Boxes (one required per box with hinged lid box and two required per box with lift-out lid)		
S120303	Universal key for Ground Boxes	

Please note: None of our ground boxes are watertight. The key to a successful installation is good drainage, to allow water to flow through the box and not stand. All boxes incorporate drainage holes, which should be assessed for adequacy for each installation.

Outline details of complementary products such as Feeder Pillars, Portable Distribution Assemblies, etc., can be found on the fourth page of this data sheet.

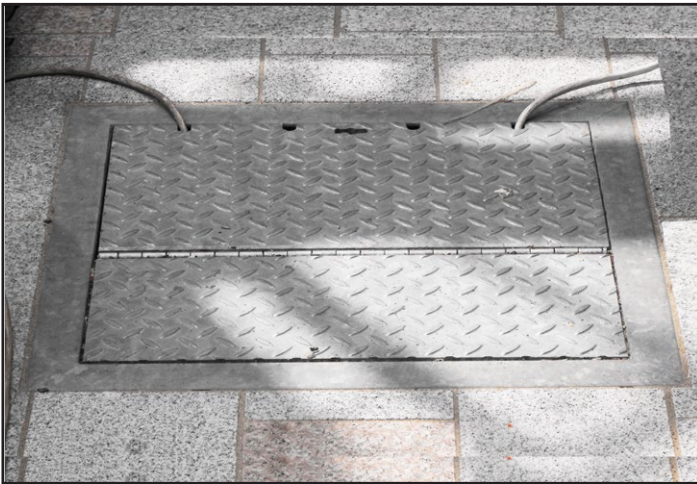
Examples of Bespoke and Standard GMDAs



Wimbledon - Bespoke GMDA with 150A socket



Rizon Jet, Biggin Hill - Bespoke GMDA



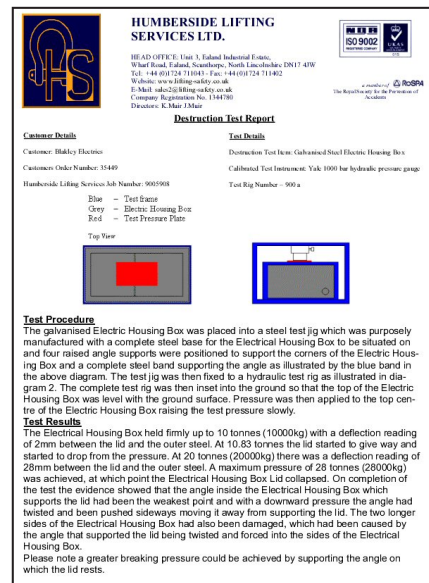
Deptford Market - Standard 4 way GMDA



Jubilee Market - Standard 2 way GMDA



GIFA/LL with in-filled lift-out lid
(In-fill supplied and fitted by others)



Destruction Test Report - Standard GMDA 101kN

Portable Distribution Assemblies and Feeder Pillars

Feeder Pillars

We can supply outdoor feeder pillars to house the service head and metering equipment for an installation or to incorporate switchgear to supply ground boxes, street lighting, etc. Pillars can be supplied as empty enclosures for equipping on site or they can be supplied as fully equipped and tested factory built assemblies.

Enclosures

Blakley pillars are of heavy duty construction, fabricated from 3mm mild steel and incorporate a hot dip galvanized natural finish (a painted top coat is an optional extra). A typical life span of 20 years can be expected, dependent on the environmental conditions and the maintenance regime. The enclosures are vandal resistant and provide protection to IP54. As standard they incorporate a water repellent timber backboard, triangular key lockable doors and a removable roof is included. Other locking arrangements are available such as Yale locks and three point locking.

Climate Control

A range of measures can be incorporated to control the micro environment within the pillar, including sun shade canopies, thermostatically controlled anti-condensation heaters and vent fans.

Full details of our range of standard pillars can be found on data sheet ref. DDS001. If you require a non-standard or an equipped pillar please contact our Customer Service Centres who will be pleased to assist.

Portable Distribution Assemblies

We manufacture a range of portable 230V distribution assemblies and accessories, which can plug-in to the 16A or 32A 230V sockets fitted within our ground mounted distribution assemblies. Images of some of the popular assemblies are alongside. We also supply similar assemblies for 400V operation.

Details of the range can be found on data sheet ref. DDS200.



FP series feeder pillar with removable roof

