

## Mains Distribution Assembly with Time Clock Control

To meet the growing demand for energy conservation we have introduced a 100A Mains Distribution Assembly with 8 no. TP outgoing ways, with 6 no. circuits automatically controlled from one programmable time clock. It is intended that the time clock controlled circuits supply transformers that feed non-emergency lighting circuits, whilst the 2 no. ways that are not controlled by the time clock feed transformers that are dedicated to Emergency Lighting Circuits (emergency fittings should be left permanently energised in order to avoid battery and tube damage through repetitive switching; they can also be used to provide security and safety lighting).

**Type: B2/I100-4P/MGPA8/TC-CC6**

**Part Number: S140441**

Mains Distribution Assembly manufactured in accordance with BS EN 60439-4.

### Enclosure

B2 series, wall mounting, sheet steel, providing protection to IP54. An optional stand is available. Enclosure finished by a pre-treatment and finishing system which is Type Tested to BS EN 60439-4 for corrosion protection in heavily polluted environments. The standard shade top coat is Poppy Red.

### Incomer

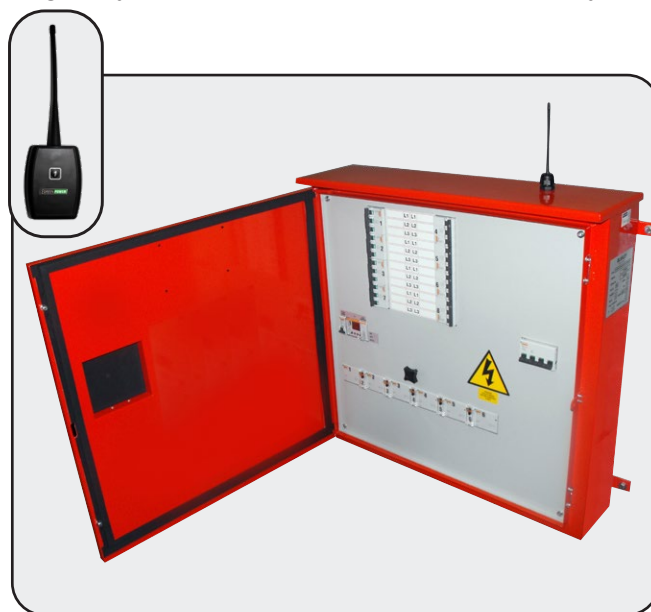
100A 4P isolator.

### Control / Distribution

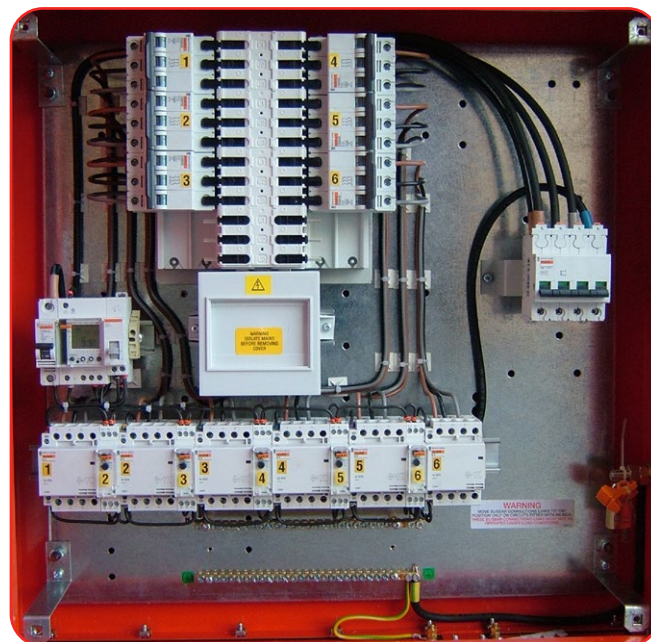
Fitted with a Merlin Gerin 8W TP pan assembly complete with 8 no. 32A TP Type "D" MCBs. 6 no. MCBs feed 40A TP contactors. The six contactors are controlled by a common programmable time clock. Five of the contactors have individual timers to prevent simultaneous closure, which averts the risk of the combined inrush current of the transformers (being fed from this assembly) from tripping the 100A MCCB that feeds the assembly. The time clock has a 72 hour battery so that settings are not lost during short power outages. An ON-OFF-AUTO switch is provided for manual control of the contactors and terminations are provided for connection to a remote override switch.

### Remote Wireless Override

As an option, a version is available with remote wireless override (part S140442) enabling the contactors to be closed or opened at any time. The remote control transmitter can be up to 500 metres distance from the MDA.



S140442 with optional Remote Wireless Override



S140441 internal view with shield plate removed