

MCCB Panelboards, IP55

We offer a standard range of IP55 MCB boards, both single-phase and three-phase, with up to 24 no. TP outgoing ways and incomers rated up to 250A. The boards are described on Distribution data sheets ref. DDS010, DDS011 and DDS013. When the current rating of the incomer exceeds 250A, or when outgoing devices are required to be MCCBs, although we do not produce a range of standard MCCB panelboards, we do have established designs that we can draw on, which enable us to produce high quality, high IP rating boards economically and with comparatively short lead times.

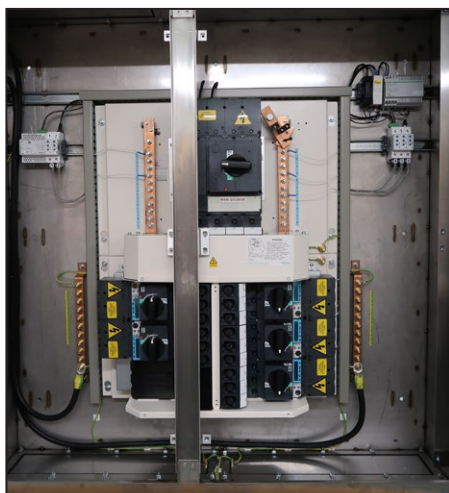
Alongside are images of an MCCB panelboard designed to provide IP55 ingress protection, fitted with a 630A TP incoming MCCB and a 6 way Schneider Powerpact MCCB pan assembly. This assembly is to be installed into an industrial installation and the enclosure is fabricated from 2mm thickness mild steel with a high quality paint finish.

Below are images of a similar panelboard which was produced for the food processing sector. In this instance the IP55 enclosure has been fabricated from 304 grade stainless steel with a brushed finish. The incoming isolator of the panelboard is rated at 400A and the outgoing Schneider NSX series MCCBs incorporate Micrologic 5.2E trips, which are connected to an Ethernet Gateway via individual MODBUS interface units. We are also able to produce our MCB boards in enclosures fabricated from grade 304 or 316L stainless.

If you have a requirement for a stainless steel or high IP rating MCCB panelboard, fitted with a Schneider Powerpact pan assembly and switchgear, please contact our Projects team who will be pleased to discuss your requirements.



A7292391 MCCB Panelboard, 630A, 6 way



A7292330 MCCB Panelboard, Brushed Stainless Enclosure, 400A, 6 way with Ethernet Gateway

Experts in **high performance**
power and lighting products

E: sales@blakley.co.uk W: www.blakley.co.uk

South: 1 Thomas Road, Optima Park, Crayford, Kent DA1 4QX

North: Suite 38, Pure Offices, Turnberry Park Road, Morley, Leeds LS27 7LE

T: 0333 188 0284

T: 0333 188 0285